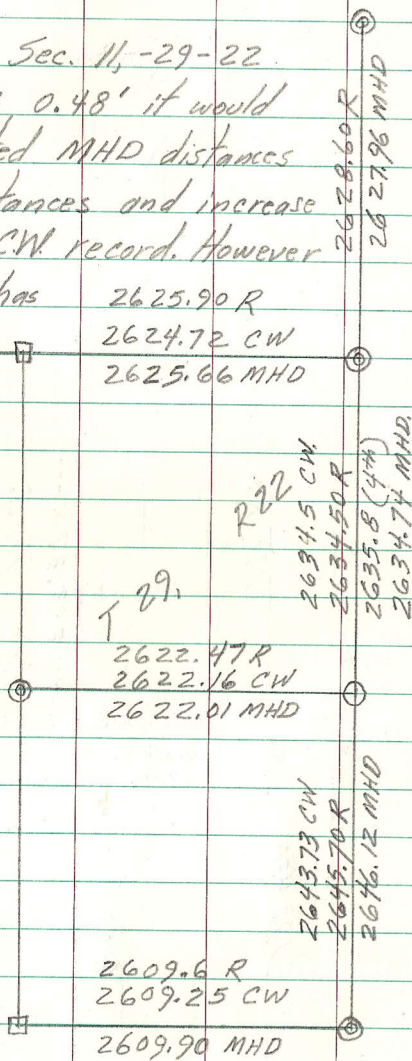


(Continued)

If the N.E. Cor. Sec. 11, -29-22 were to move W. 0.48' it would match the prorated MHD distances to R. county distances and increase the Δ closer to CW record. However too much platting has been done off the position of the existing C.I. to move it now.



(4th) = 4th Add. to N. St. Paul (1887)
C.W. = Castlewood (1915)
MHD = Minn. Hwy Dept (1975)
R = Co. Measurement (1900±)
Comp = computed theoretical center

