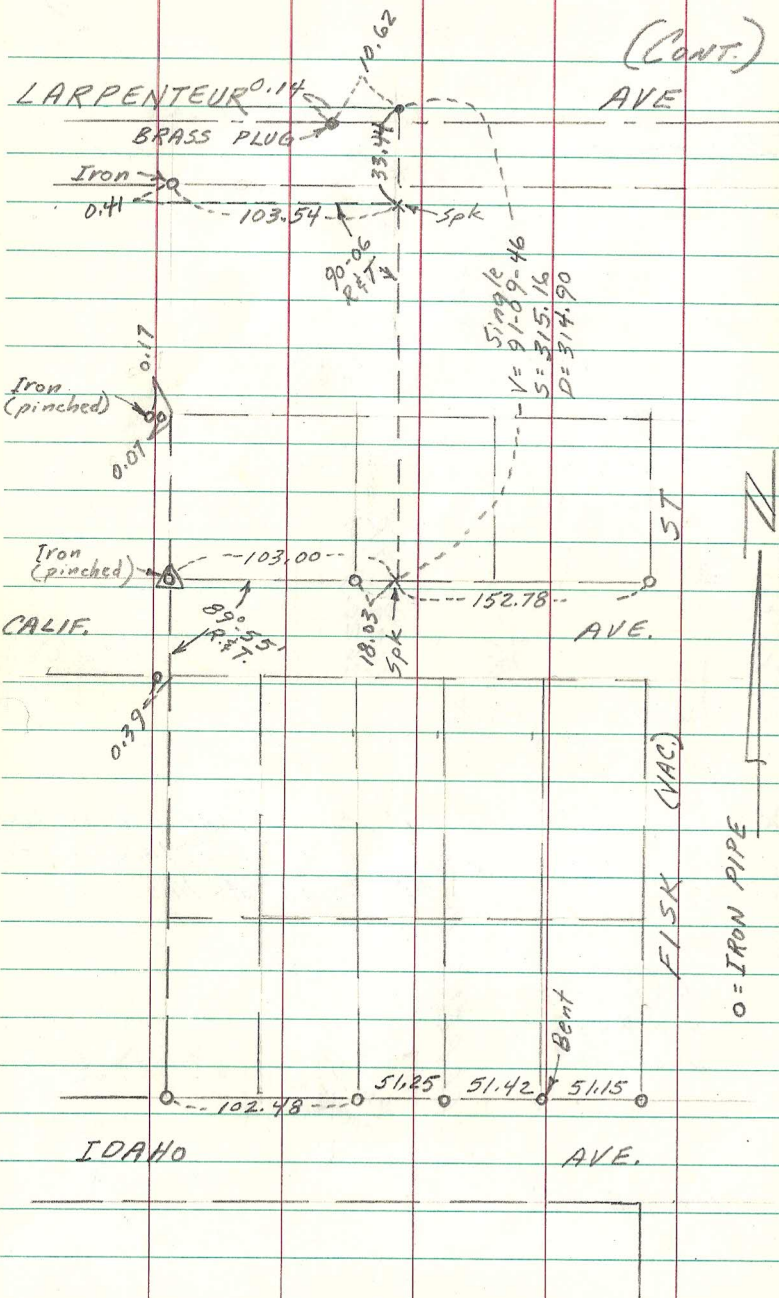


(CONT.)



Quarter Quarter Corner btwn. (Dale St. & 1/4 corner near Victoria St.) on Larpenteur Ave. [Survey Bk 3, Pg. 2] proves to be correctly located as compared to City of St. Paul surveys (Bk. 1357-pg. 14).

N. 1/4 Corner Sec. 23, T29, R23 [Sur. Book 3, Pg. 143] proves to be correct as per survey in Book , Pg. 11 in St. Paul records dated 1942 when granites existed.

N.E. Cor. Sec. 23, T29, R23 does not match with old county hwy. dept. ties nor surveys by City of St. Paul in 1942 on Dale St. in Bk. Pg.