

PERRY'S RESIDENCE
(OPEN SPACE)
PART NW 1/4 Sec. 33-30-23

5pk. near N. line Sec. 33 & 1/2 N.B. Road

Single
V = 88-47-33
S = 753.320
D = 753.153

Single
V = 91-26-00
S = 1318.864
D = 1318.451

48.15 @ 30° @ V. &
= 109° 30' 47" = 45.37

90-06-26
@ N.B. Rd. & Hudson Ave

Triple
V = 90-22-03
S = 575.794
D = 575.715

Triple
V = 91-44-52
S = 660.564
D = 660.190

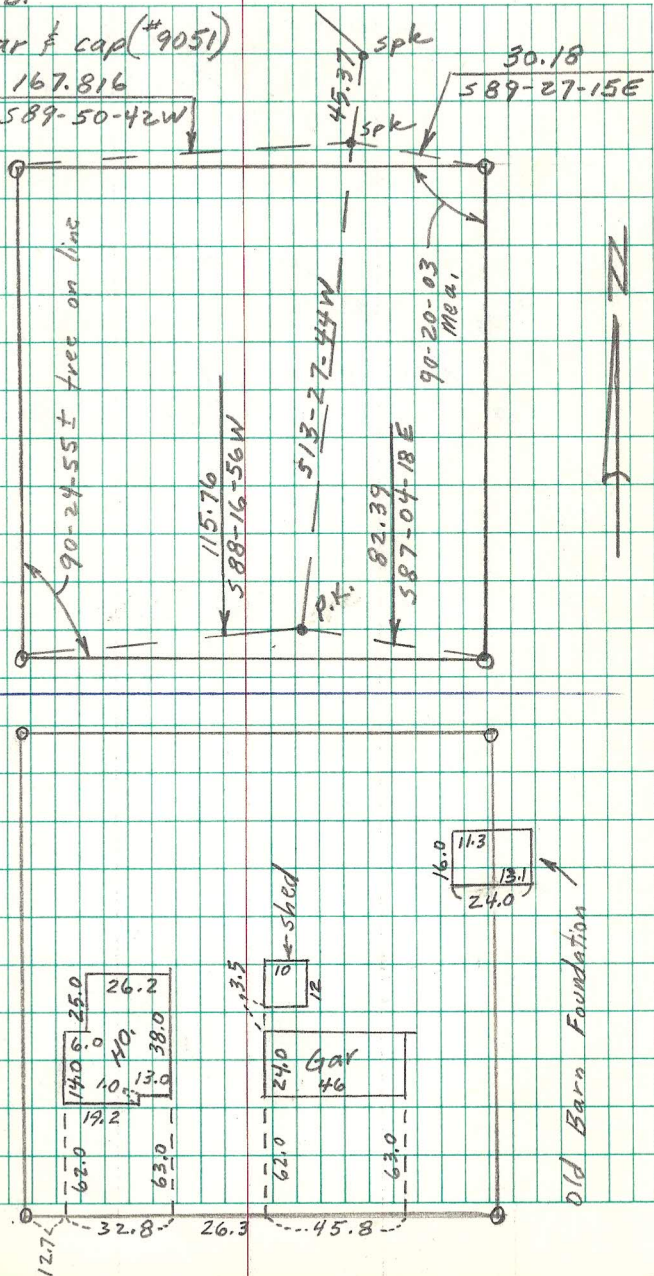
@ N.B. Rd. & Co. Rd. E
(ties page 20)

Triple
V = 90-00-53
S = 1319.776
D = 1319.709

@ N.B. Road & Stowe Ave.

Crew R.M. Dec. 5, 6, 1978 cold 30°
P.K. cold 80° 19
P.D.

o = re-bar & cap (#9051)



Old Barn Foundation