

Merrills Div. of Rice St. Villas
 Lot 10 & 15 ft. Lot 11 Blk. 9.

30

60

Park Ave.

12+87.36

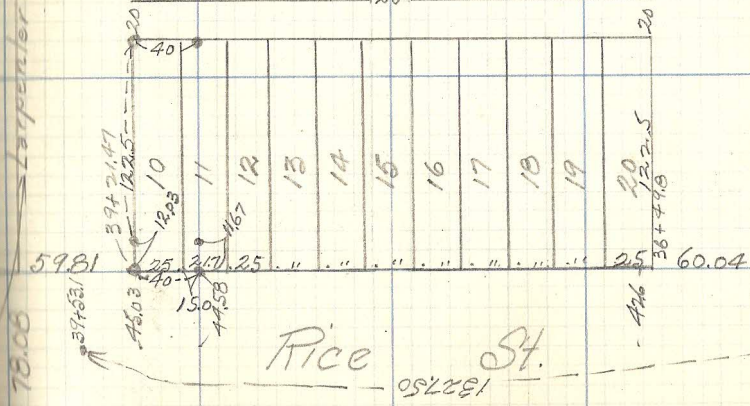
.13+26.07

53.66 26.08 5+47.27

Lapenler Ave 5078.61

Hoyte Ave.

Montana Ave.



60

Rice St.

1327.50

K.C.P.