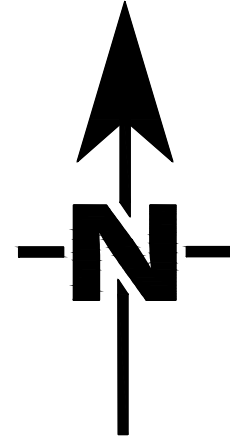


CERTIFICATE OF SURVEY

1030 RICE STREET, ST. PAUL, MN



Orientation of the bearing system is based on Ramsey County Coordinates, NAD 83, (2011 adjustment).

LOT AREA SQUARE FOOTAGE:
24,508 SQUARE FEET

- LEGEND**
- MONUMENT FOUND
 - MONUMENT SET
 - x-0.073 EXISTING SPOT ELEVATION
 - ~ EXISTING CONTOURS
 - CATCH BASIN
 - x CURB STOP
 - UTILITY PEDESTAL
 - ☆ LIGHT POLE
 - ⊖ SIGN
 - BOLLARD
 - UTILITY POLE
 - WOOD FENCE
 - CHAIN LINK FENCE
 - METAL FENCE
 - OVERHEAD UTILITY LINE
 - GAS LINE
 - WATER LINE
 - ▨ OVERHEAD CANOPY
 - ▨ CONCRETE SURFACE

LEGAL DESCRIPTION

Lots 13 and 14, Block 3, J.F. Eisenmenger's Addition
(Torrens property as evidenced by certificate of title no. 224889)

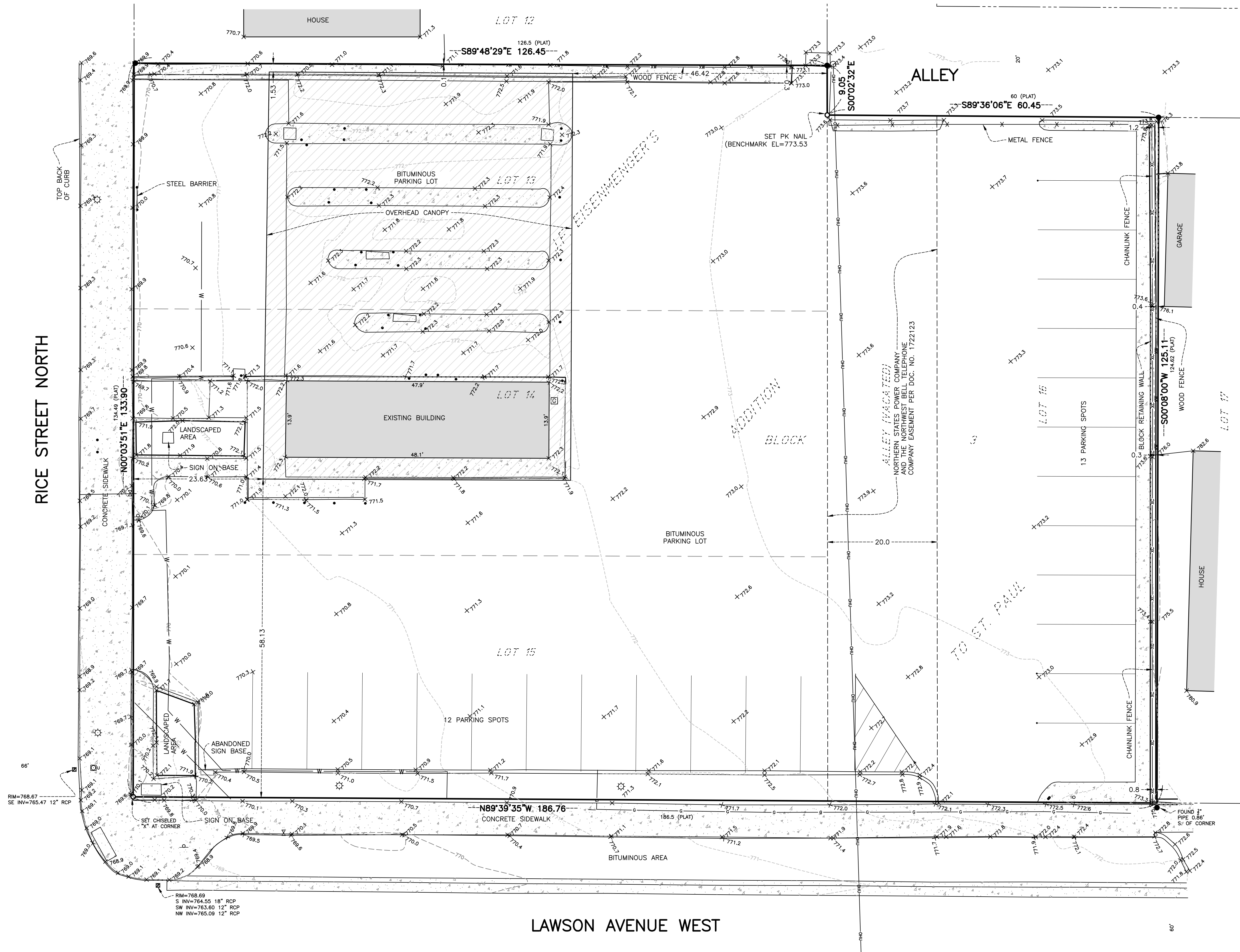
AND

Lots 15 and 16, Block 3, J.F. Eisenmenger's Additon
(Abstract Property)

SURVEYOR:

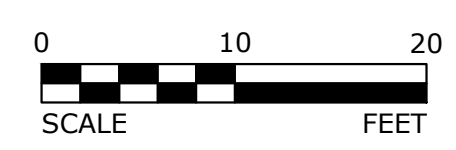
Stonebrooke Engineering, Inc.
12467 Boone Ave. S., Suite 1
Savage, MN 55378
Phone: 952-402-9202
Fax: 952-403-6803
www.stonebrookeengineering.com

BENCH MARK:
TOP OF MAG NAIL SET AT SOUTHWEST CORNER OF ALLEY
ELEVATION = 773.53 (NAVD 88)



Jul 05, 2023 5:09pm - \\SEISRV\SBESEServer\PROJECTS\SURVEY\HW2_Design&Architecture\S1111 (Lots 13-16 AND Alley, Block 3, J.F. EISENMENGER'S ADDITION, St. Paul)\Cadd_Files\S1111TP01.dwg

REV. NO.	DATE	BY	CHK	DESCRIPTION
1	6/16/2023	ACR	AJM	ADDED SPOT ELEVATIONS
2	6/20/2023	ACR	AJM	ADDED UTILITIES



I HEREBY CERTIFY THAT THIS SURVEY, PLAN, OR REPORT WAS PREPARED BY ME OR UNDER MY DIRECT SUPERVISION AND THAT I AM A DULY LICENSED LAND SURVEYOR UNDER THE LAWS OF THE STATE OF MINNESOTA.

Aaron J. Mages

NAME: Aaron J. Mages LIC. NO.: 45507 DATE: 05-12-2023

DESIGNED: AJM
DRAWN: JPC
CHECKED: AJM



CERTIFICATE OF SURVEY	SHEET
LOTS 13-16, BLOCK 3	1
J.F. EISENMENGER'S ADDITION	OF
	1