

FROM THE OFFICE OF

CHARLES O. GEORGI COMPANY

2215 West County Road B

Saint Paul, Minnesota

MINNESOTA REGISTERED LAND SURVEYOR

Certificate of Survey

I Herby Certify that this plat shows a ^{land division} survey made by me of the property described on this plat, and that the corners ^{are} ~~are~~ correctly placed as shown, and that all locations, encroachments, etc., have been correctly shown.

North Line of SW 1/4 of NW 1/4 of Section 8, T29, R22

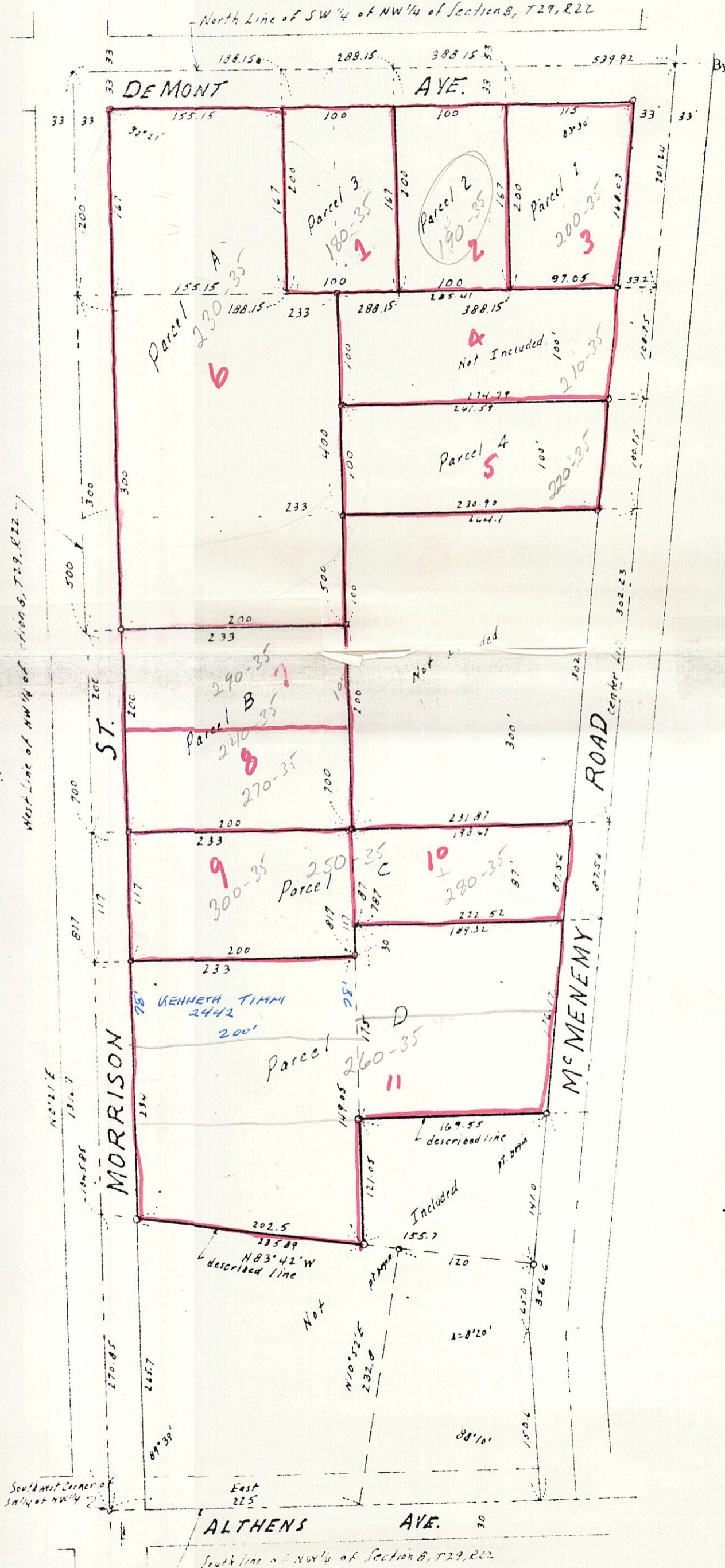
By *Charles O. Georgi*
REGISTERED LAND SURVEYOR

Surveyors Note:

Corners as shown were placed by Harold A. Wilke, Registered Land Surveyor No. 2215 and distances and angles as shown are in accordance with his survey dated January 28, 1972.

No corners were placed or locations taken at time of this land division.

- 1-180
- 2-190
- 3-200
- 4-210
- 5-220
- 6-230
- 7-290
- 8-270 } 240
- 9-300
- 10-280 } 250
- 11-260



ALTHENS AVE. 30

South Line of NW 1/4 of Section 8, T29, R22