



# Certificate of Survey

FROM THE OFFICE OF

## PAUL R. McLAGAN & SON

233 Dakota Avenue

WEST ST. PAUL, MINN. 55118

Minnesota Registered Land Surveyors

I Hereby Certify that this plat shows a survey made by me of the property described on this plat, and that the corners are correctly placed as shown, and that all locations, encroachments, etc., have been correctly shown.

Surveyed For **William H. Weitzman Assoc.**

**WAYNE McLAGAN, Consultant**

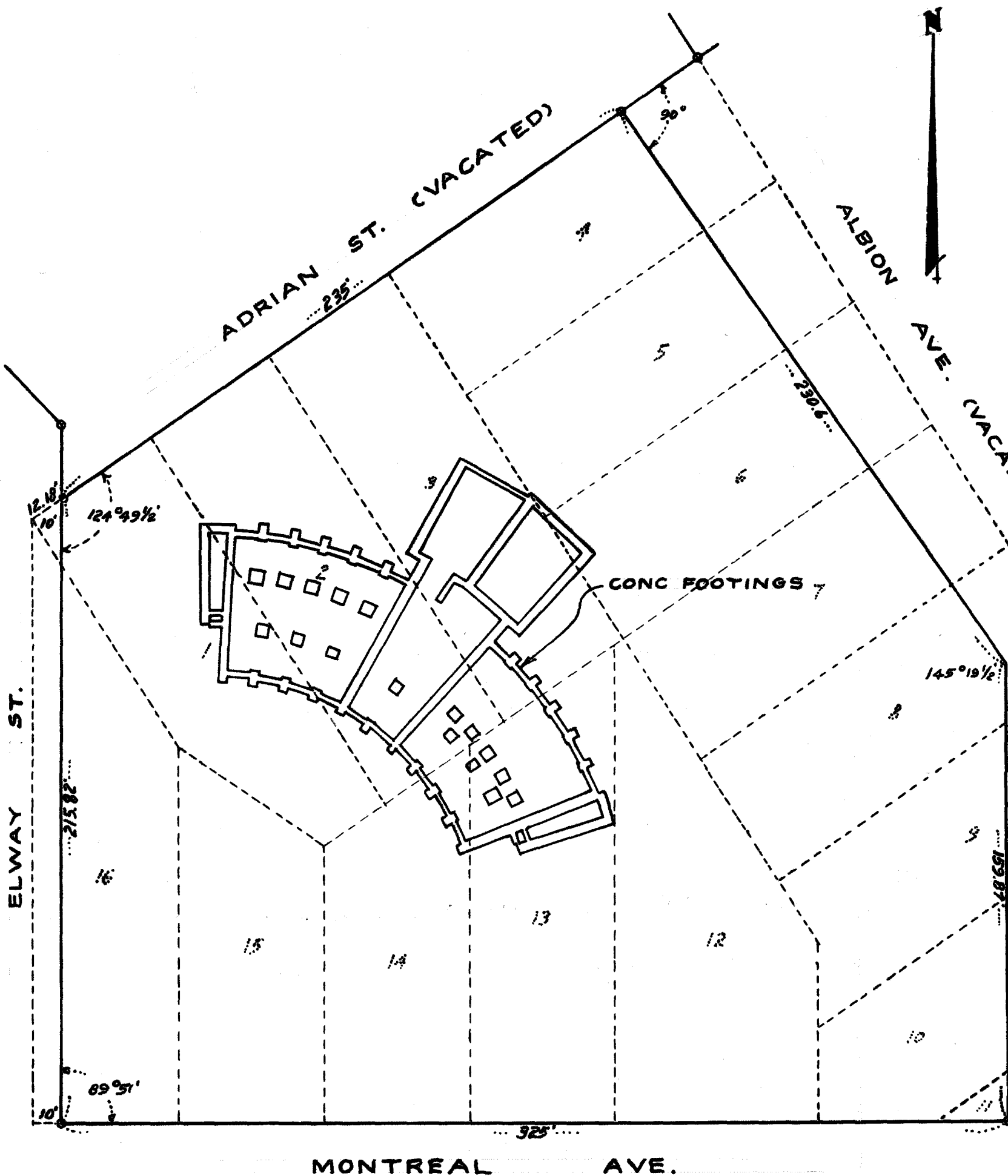
Date **September 27, 1968**

Scale **1 inch = 40 feet**

*Wayne M. Lagan*

### DESCRIPTION

Lots 1, 2, 3, 12, 13, 14, 15 & 16, Block 31, West End Add., subject to conveyance to the City of St. Paul for street by Warranty Deed in Book 1780, Page 866; and those parts of Lots 4 to 11 inclusive in Block 31 lying Westerly and Southwesterly of lines described as follows: Beginning at a point on the South line of said Block 31, distant 335 feet East of the Southwest corner thereof; thence running North at right angle to said South line for 159.87 feet; thence Northwest to a point on the Northwest line of said Block 31 distant 247.18 feet Northeast of the intersection of said Northwest line with the West line of said Block 31; according to the plat thereof on file and of record in the office of the Register of Deeds, in and for Ramsey County, Minnesota.



MONTREAL AVE.