

PLAT OF SURVEY

by
R. C. WOLFGRAM, REGISTERED LAND SURVEYOR
ST. PAUL, MINNESOTA

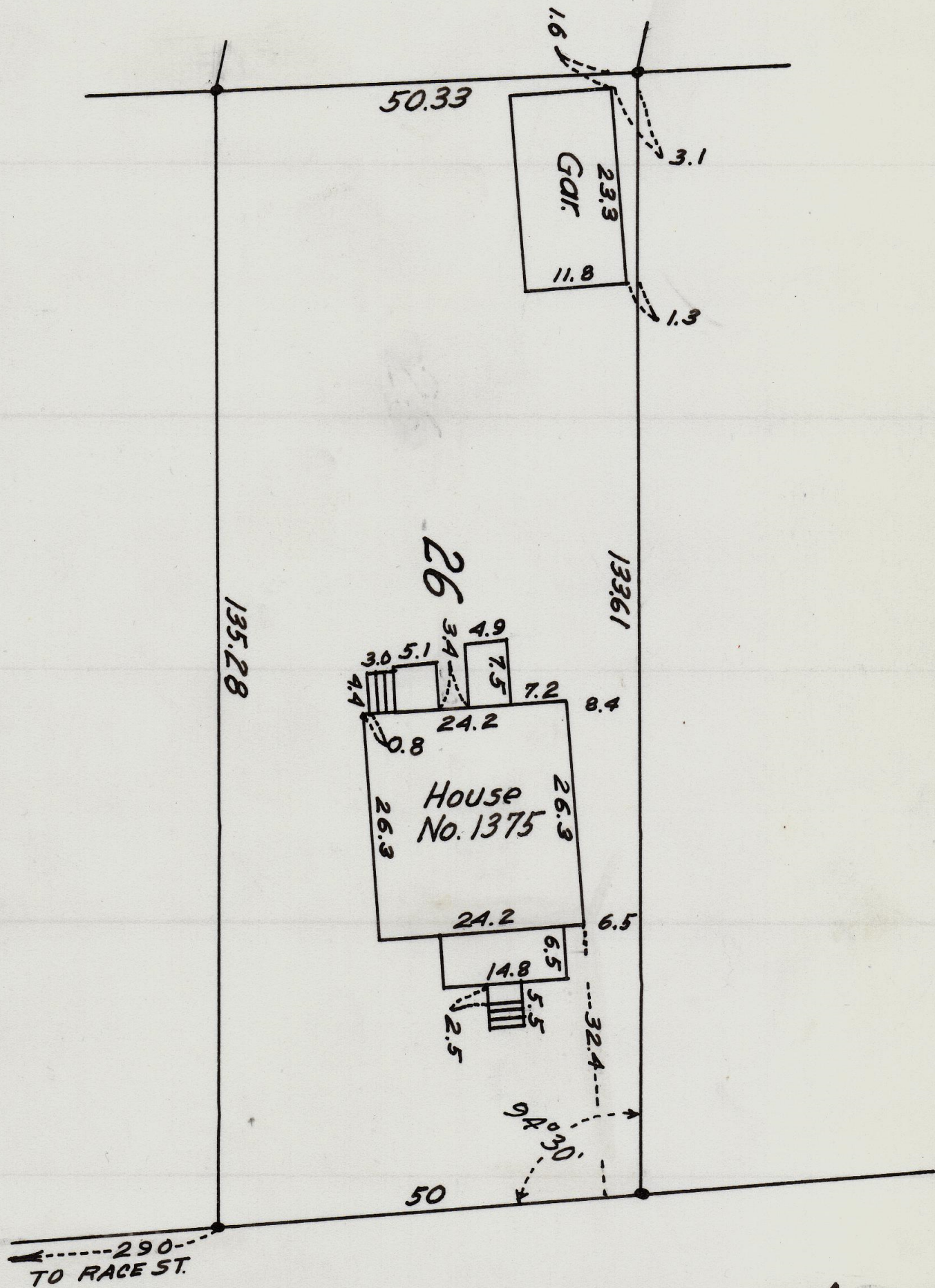
I hereby certify that this is a true and correct plat of a survey of the land shown and described hereon, and that any monuments or markers indicated hereon have been placed as shown, and that any improvements or physical conditions indicated hereon are as shown.

Surveyed *April 13, 1955*

R. C. Wolfgram

Plat Scale - 1 in = 20 ft. • Indicates Iron Mont.

Description - *Lot 26, Block 23, West End.*



ALASKA

AVE.

