

Merrills Div. of Rice St. Villas
 Lot 10 S. No 15 ft. Lot 11 Blk. 9.

30

60

Park Ave.

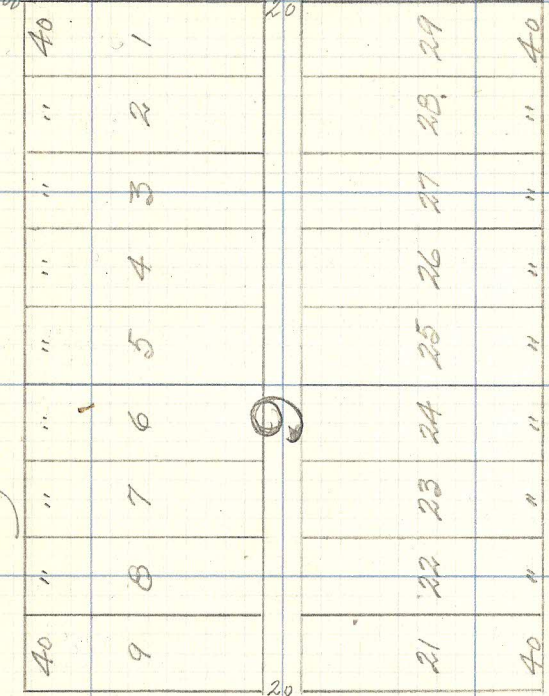
12+87.30

.13126.07

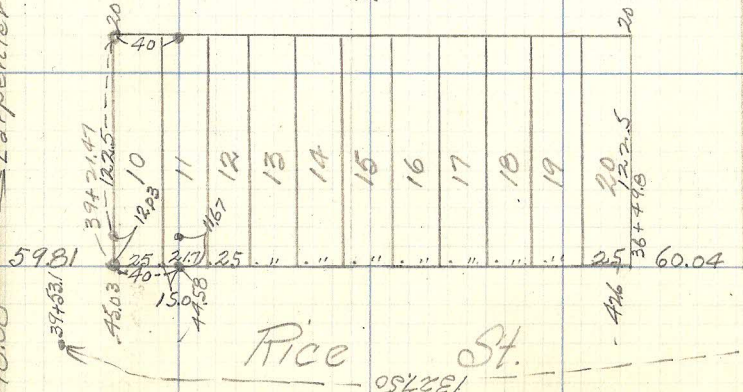
3366 2608 54727

Hoyte Ave.

Montana Ave.



78.08 → Carpenter Ave = 5278.81



Rice St.

1327.50

60

33
 22.06 42.31
 L.C.R. - 26+25.59