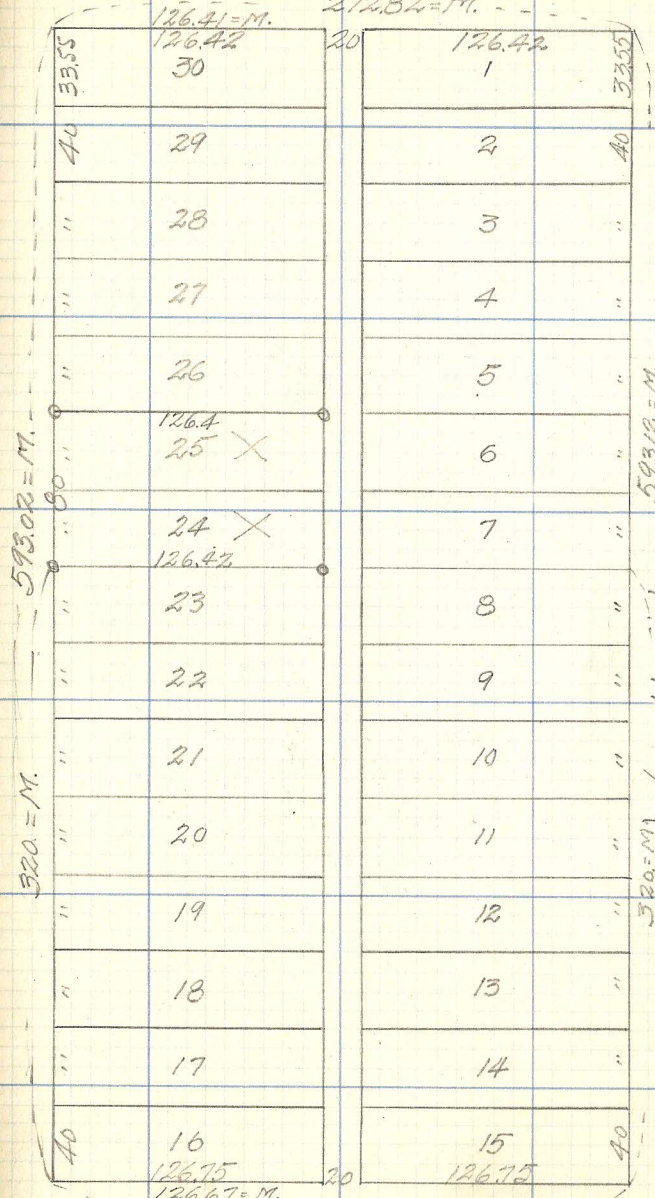


Norton's Add. Lots 24-35 Blk. I

South St.
272.82 = M.



Carbon St.
273.34 = M.
273.50 = R.

Woodbridge

66 60 66 17 66

126.41 = M.
126.42

126.42

320 = M.

593.02 = M.

593.18 = M.

126.4

126.42

126.75

126.67 = M.

273.34 = M.
273.50 = R.