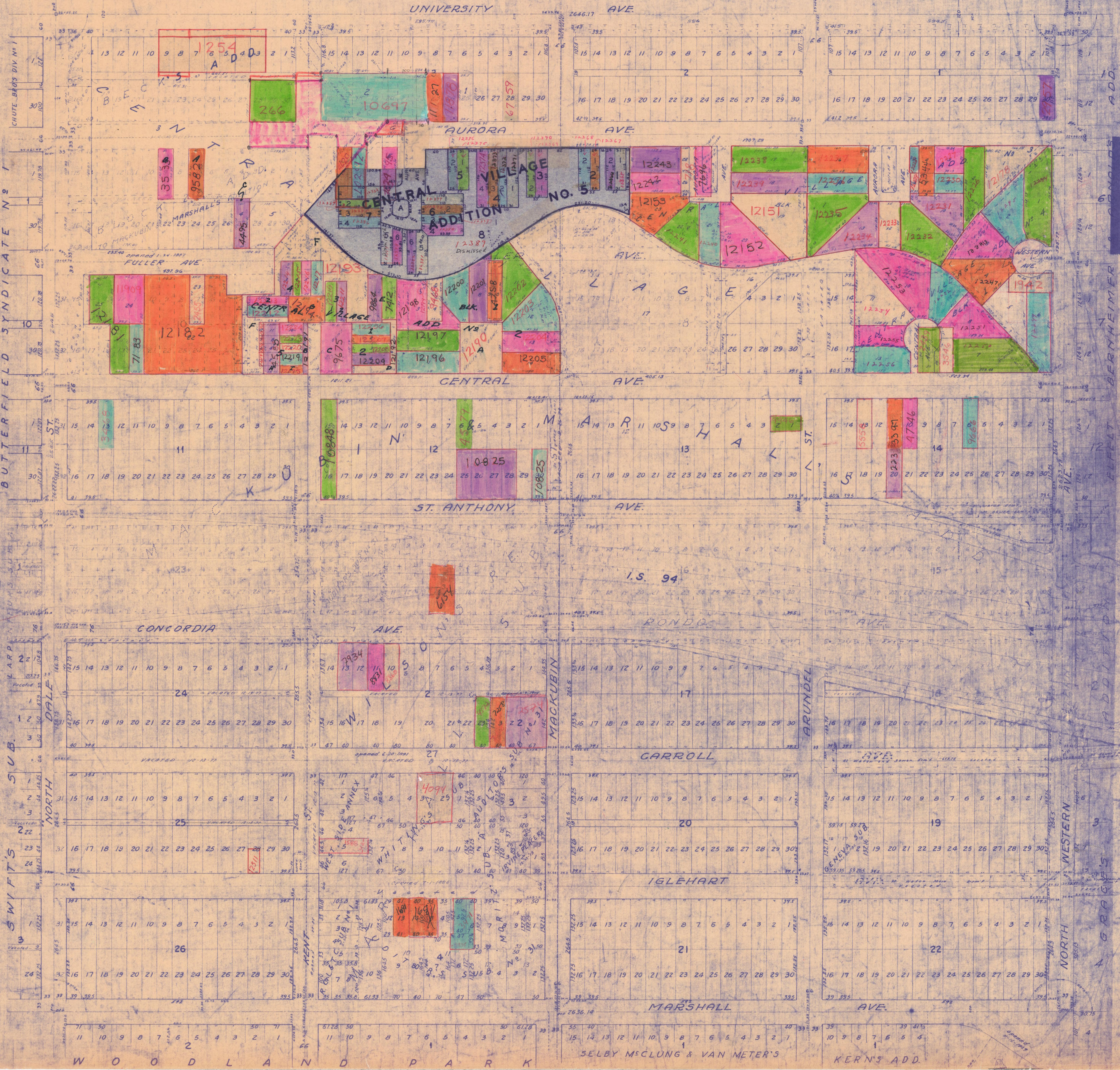


S.W. 1/4 - SEC. 36 - T.29 - R.23

SUBDIVISIONS: S U B O F B L 13, MICHEL'S SUB, S M I T H S U B



CHUTE BAS'S DIV. NO. 1, BUTTERFIELD SYNDICATE NO. 1, KARP & HUBBIS SUB. NO. 1, SWIFT'S SUB. NORTH DALE, NORTH MARSHALLS, FULLER AVE.

ADD, CONCORDS, BERNHEIMER, ELFELT, ADDITION, WESTERN, AGRICULTURAL, KERN'S ADD.

SW 1/4 36-29-23