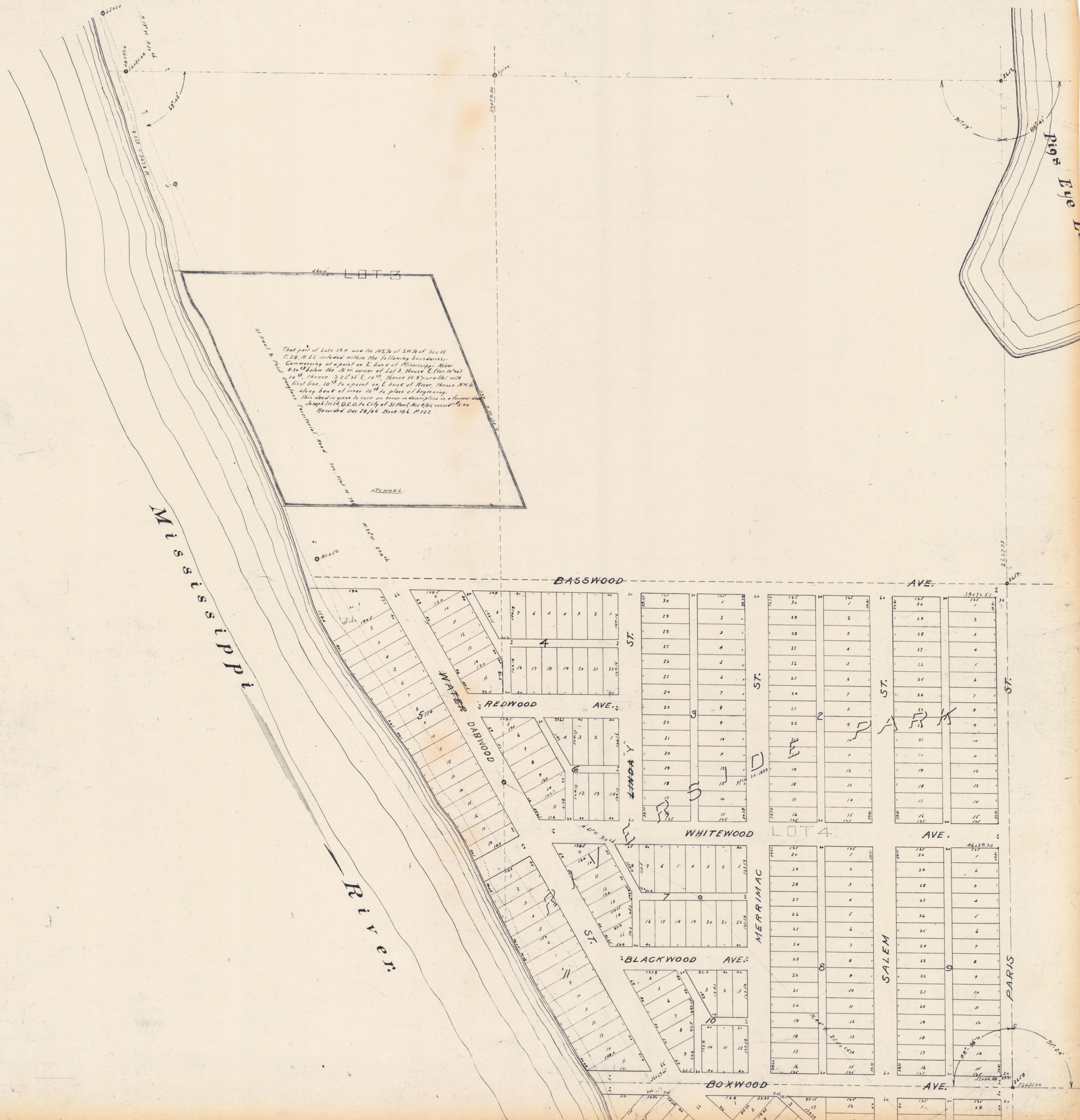


S.W. 1/4, Sec. 15-28-22.



That part of Lots 3 & 4 and the NE 1/4 of SW 1/4 of Sec. 15, T. 28, R. 22 included within the following boundaries: Commencing at a point on E. bank of Mississippi River 8.30' below the NW corner of Lot 3, Thence E. (on 10' to 10' thence S 22° 35' E, 10' thence W 8° parallel with the first line, 10' to a point on E. bank of River, thence NW 1/4 along bank of river 10' to place of beginning. This deed is given to cure an error in description in a former deed Joseph Irish, Q.C.D. to City of St. Paul, No. 115, conside' 25.00 Recorded Dec. 28/96, Book 186, P. 122

Mississippi River

Pigs Eye

SW 1/4 15-28-22