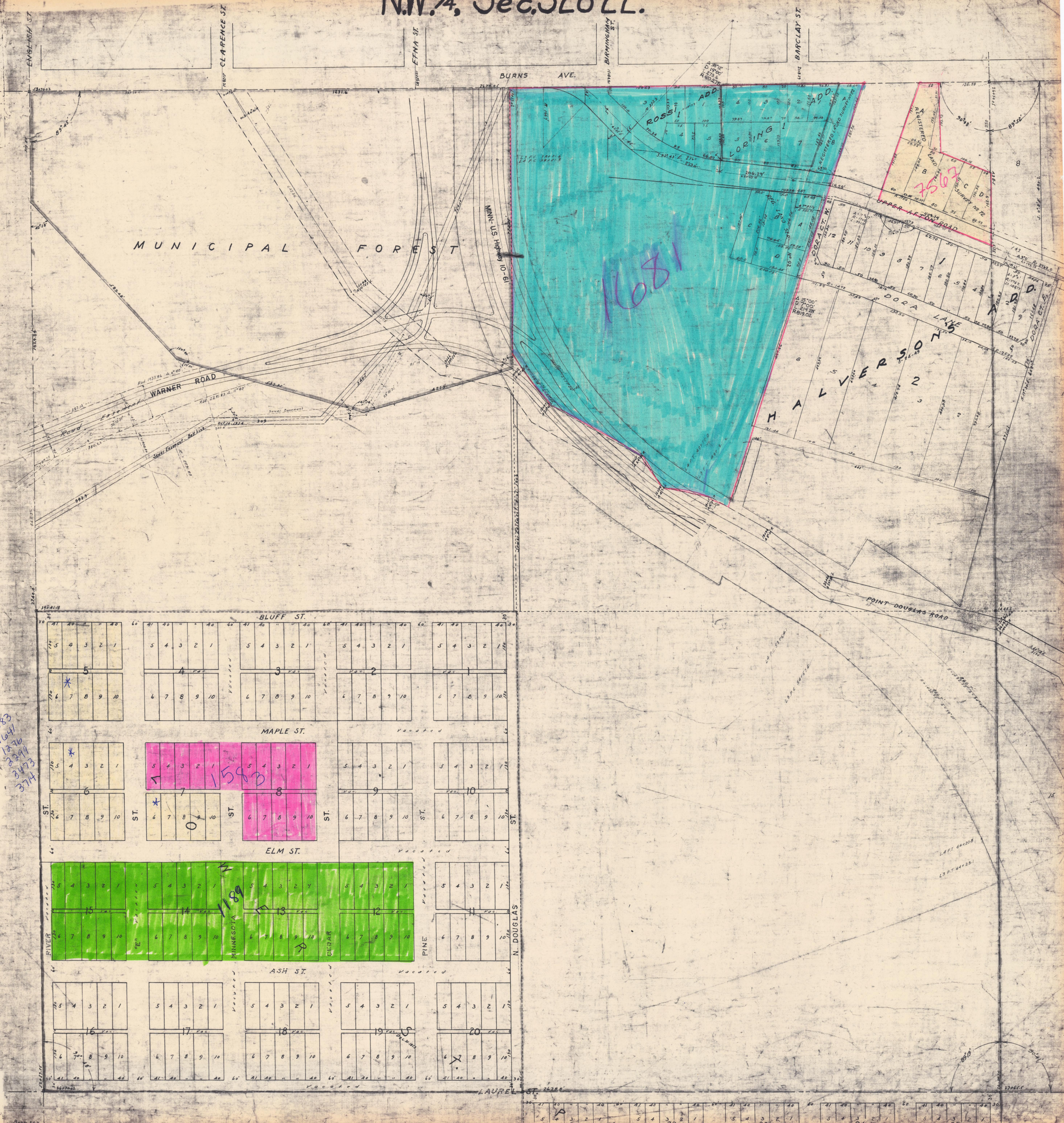


N.W. 1/4, Sec. 328-22.



* 1583
1641
1376
2494
3473
3774

N.W. 1/4
328-22

BLUFF ST.				
1	2	3	4	5
6	7	8	9	10
MAPLE ST.				
11	12	13	14	15
16	17	18	19	20
ELM ST.				
21	22	23	24	25
26	27	28	29	30
ASH ST.				
31	32	33	34	35
36	37	38	39	40
LAUREL ST.				

41	42	43	44	45
46	47	48	49	50