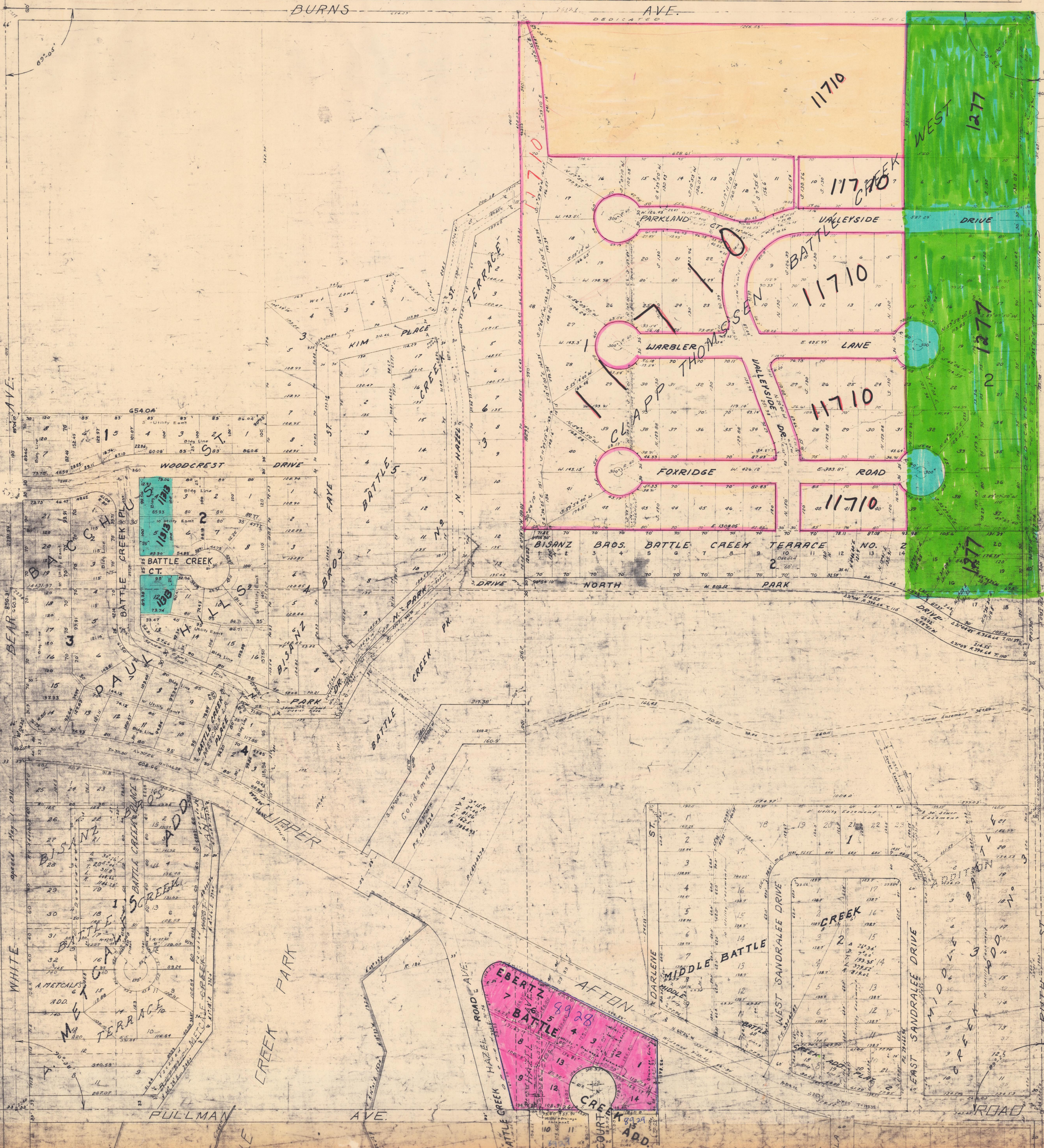


N.W. 1/4 Sec. 2-28-22



x
N.W. 1/4
2-28-22

22-20

092-00

092-00

BEAR AVE.
WHITE
PULLMAN AVE.

BURNS AVE. DEDICATED

11710

WEST 1277

11710

1277

11710

1277

EBERTZ BATTLE CREEK ADD.
AFTON
COURT CREEK ADD.

11710

1277

WOODCREST DRIVE

BATTLE CREEK CT.

KIM PLACE

TERRACE

WARBLER THOMAS

11710

FOX RIDGE ROAD

11710

BISANZ BROS. BATTLE CREEK TERRACE NO. 2

DRIVE NORTH PARK

WEST SANDRALEE DRIVE

EAST SANDRALEE DRIVE

RUTH ST.

BATTLE CREEK PARK

BATTLE CREEK PK.

BATTLE CREEK HAZEL ROAD

MIDDLE BATTLE CREEK

WEST SANDRALEE DRIVE

EAST SANDRALEE DRIVE

RUTH ST.

BEAR AVE.

BATTLE CREEK PL.

KIM PLACE

TERRACE

WARBLER THOMAS

11710

FOX RIDGE ROAD

11710

BISANZ BROS. BATTLE CREEK TERRACE NO. 2

DRIVE NORTH PARK

WEST SANDRALEE DRIVE

EAST SANDRALEE DRIVE

RUTH ST.

BATTLE CREEK PARK

BATTLE CREEK PK.

BATTLE CREEK HAZEL ROAD

MIDDLE BATTLE CREEK

WEST SANDRALEE DRIVE

EAST SANDRALEE DRIVE

RUTH ST.

BEAR AVE.

BATTLE CREEK PL.

KIM PLACE

TERRACE

WARBLER THOMAS

11710

FOX RIDGE ROAD

11710

BISANZ BROS. BATTLE CREEK TERRACE NO. 2

DRIVE NORTH PARK

WEST SANDRALEE DRIVE

EAST SANDRALEE DRIVE

RUTH ST.

BATTLE CREEK PARK

BATTLE CREEK PK.

BATTLE CREEK HAZEL ROAD

MIDDLE BATTLE CREEK

WEST SANDRALEE DRIVE

EAST SANDRALEE DRIVE

RUTH ST.