

N.E. 1/4 SEC. 20, T. 29, R. 23.

LARPEN TEUR

AVE.

THIS IS A COMPILATION OF RECORDS AS THEY APPEAR IN THE RAMSEY COUNTY OFFICES AFFECTING THE AREA SHOWN. THIS DRAWING IS TO BE USED ONLY FOR REFERENCE PURPOSES AND THE COUNTY IS NOT RESPONSIBLE FOR ANY INACCURACIES HEREIN CONTAINED.

FOR FALCON HEIGHTS & ROSEVILLE SEE SUBURBAN MAPS

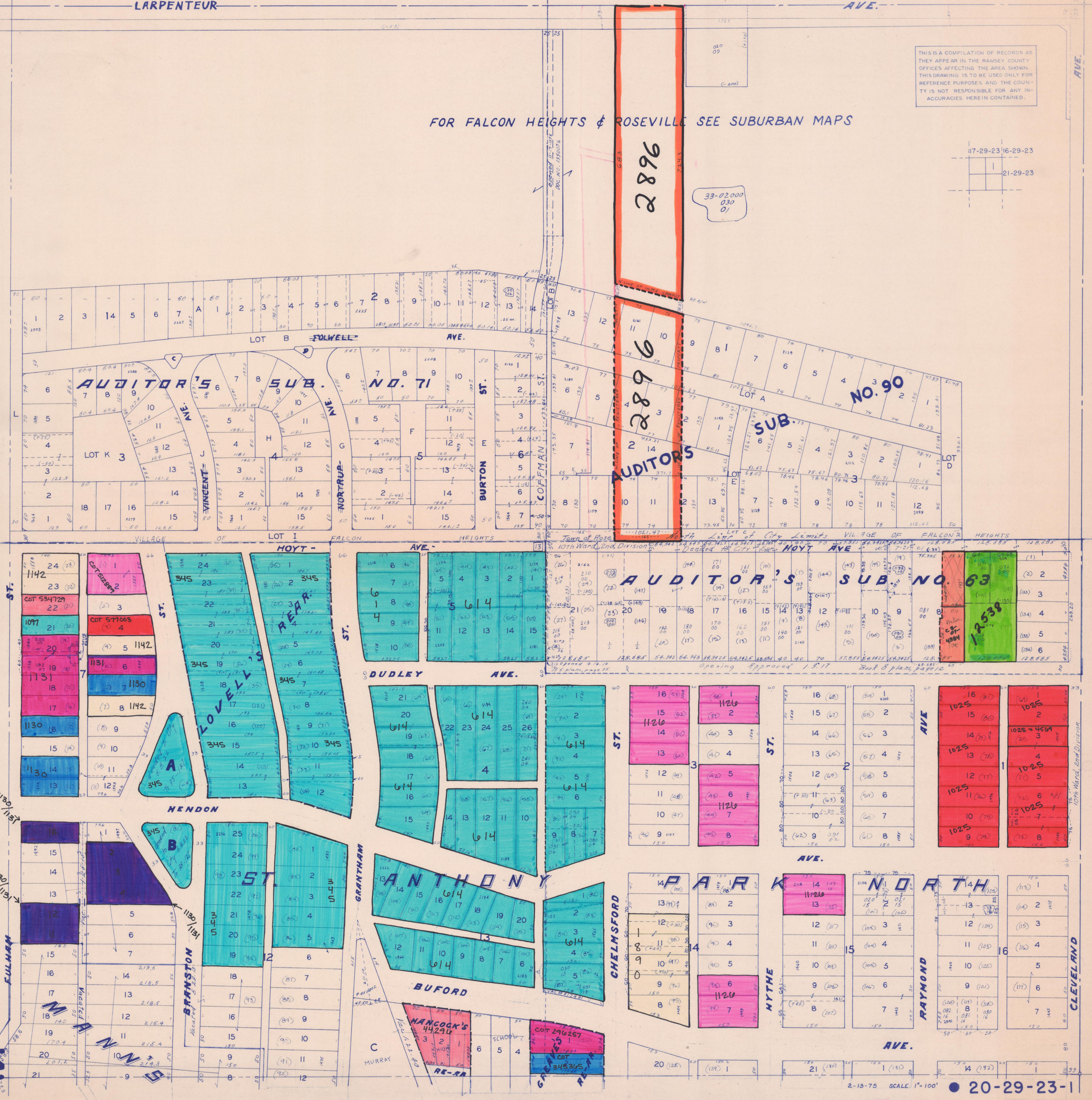
17-29-23 16-29-23
21-29-23

2896

33-02,000
030
01

2896

AUDITORS



NE 1/4
20-29-23

113201