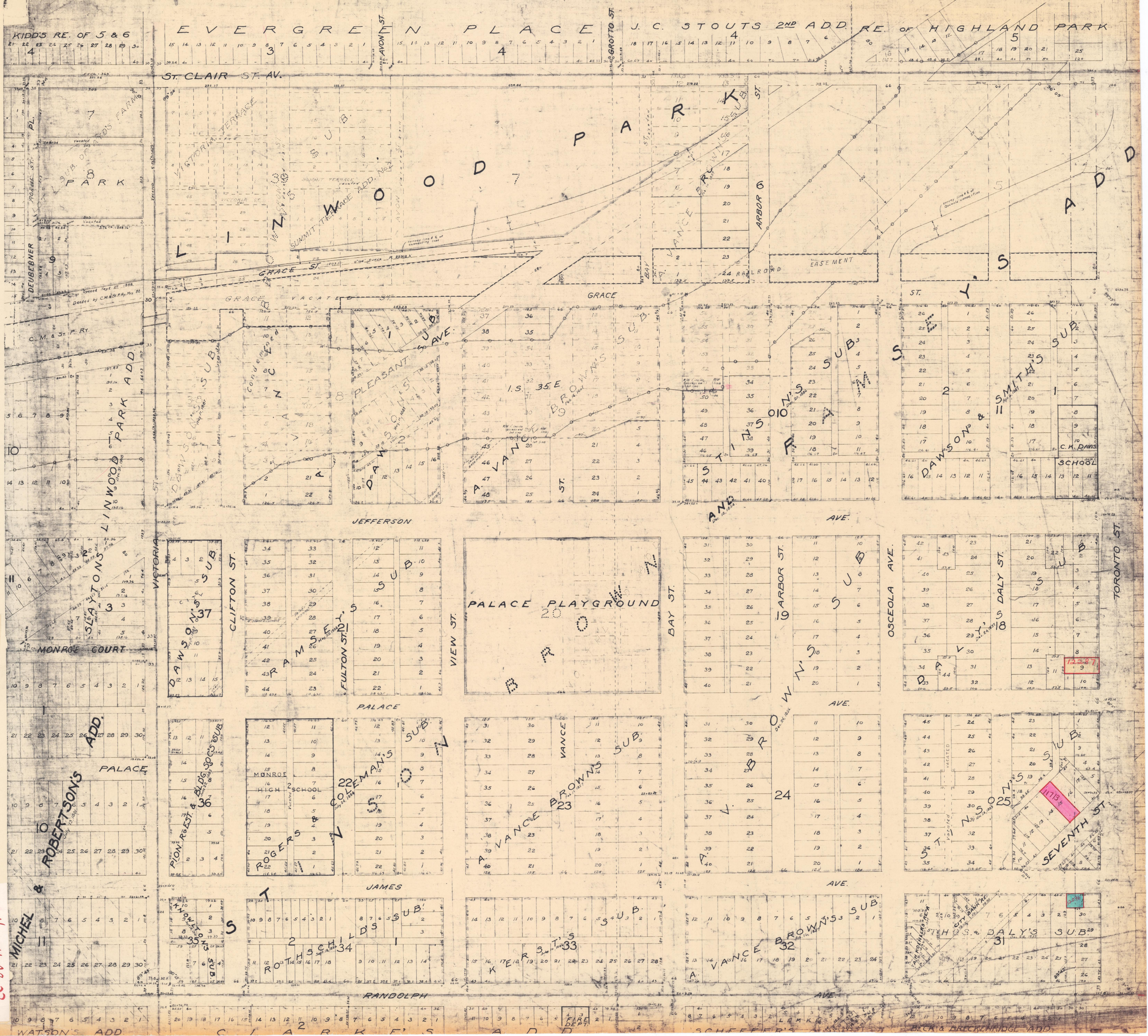


N.E. 1/4 Sec. 11, 28, 23.



N.E. 1/4 T13  
11-28-23

KIDD'S RE. OF 5 & 6  
21 22 23 24 25 26 27 28 29 30  
4

EVERGREEN PLACE  
15 14 13 12 11 10 9 8 7 6 5 4 3 2 1  
3

J. C. STOUTS 2ND ADD. RE. OF HIGHLAND PARK  
18 17 16 15 14 13 12 11 10 9 8 7 6  
4

ST. CLAIR ST. AV.

PARK

DODD

PARK

S

ADD

GRACE VACATED

GRACE

ST.

LINWOOD PARK ADD.

CONDOR SUB

PLEASANT SUB

P. VANCO SUB

BROWNS SUB

ST. ION'S SUB

ST. ION'S SUB

DAWSON'S SUB

SMITH'S SUB

SCHOOL

JEFFERSON

OSCEOLA AVE.

OSCEOLA AVE.

TORONTO ST.

SLAYTONS SUB

DAWSON'S SUB

AMUSEMENT SUB

FULTON ST. SUB

PALACE PLAYGROUND

ARBOR ST. SUB

ARBOR ST. SUB

DALY ST. SUB

DALY ST. SUB

ROBERTSON'S ADD.

PION REST. & BLDG. SUB

MONROE HIGH SCHOOL

COLEMAN'S SUB

VANCE BROWNS SUB

ARBOR ST. SUB

ARBOR ST. SUB

ST. ION'S SUB

SEVENTH ST. SUB

MICHEL SUB

ROTHSCHILD'S SUB

ROTHSCHILD'S SUB

ROTHSCHILD'S SUB

ROTHSCHILD'S SUB

VANCE BROWNS SUB

VANCE BROWNS SUB

DALY'S SUB

DALY'S SUB

WATSON'S ADD.

WATSON'S ADD.

WATSON'S ADD.

WATSON'S ADD.

WATSON'S ADD.

WATSON'S ADD.

WATSON'S ADD.

WATSON'S ADD.

WATSON'S ADD.

WATSON'S ADD.