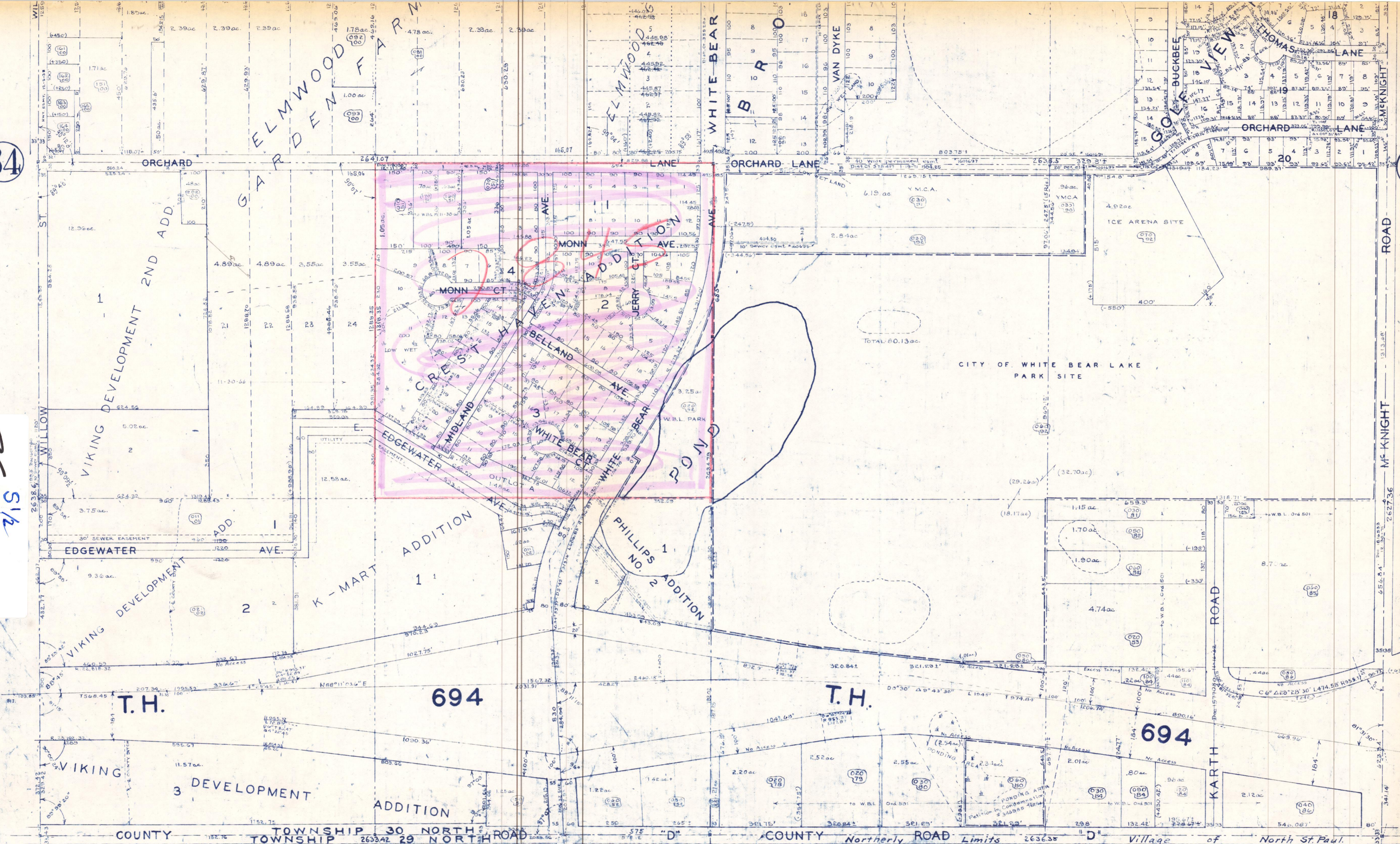


34

35

35-30-22
S1/4



T.H.

694

T.H.

694

VIKING DEVELOPMENT 3

ADDITION

PONDING AREA

COUNTY TOWNSHIP 30 NORTH ROAD COUNTY Northerly ROAD Limits 263635 "D" Village of North St. Paul.

AREA & DIMENSIONS SUBJECT TO CHANGE

2

35-30-22

COUNTY ASSESSOR'S OFFICE