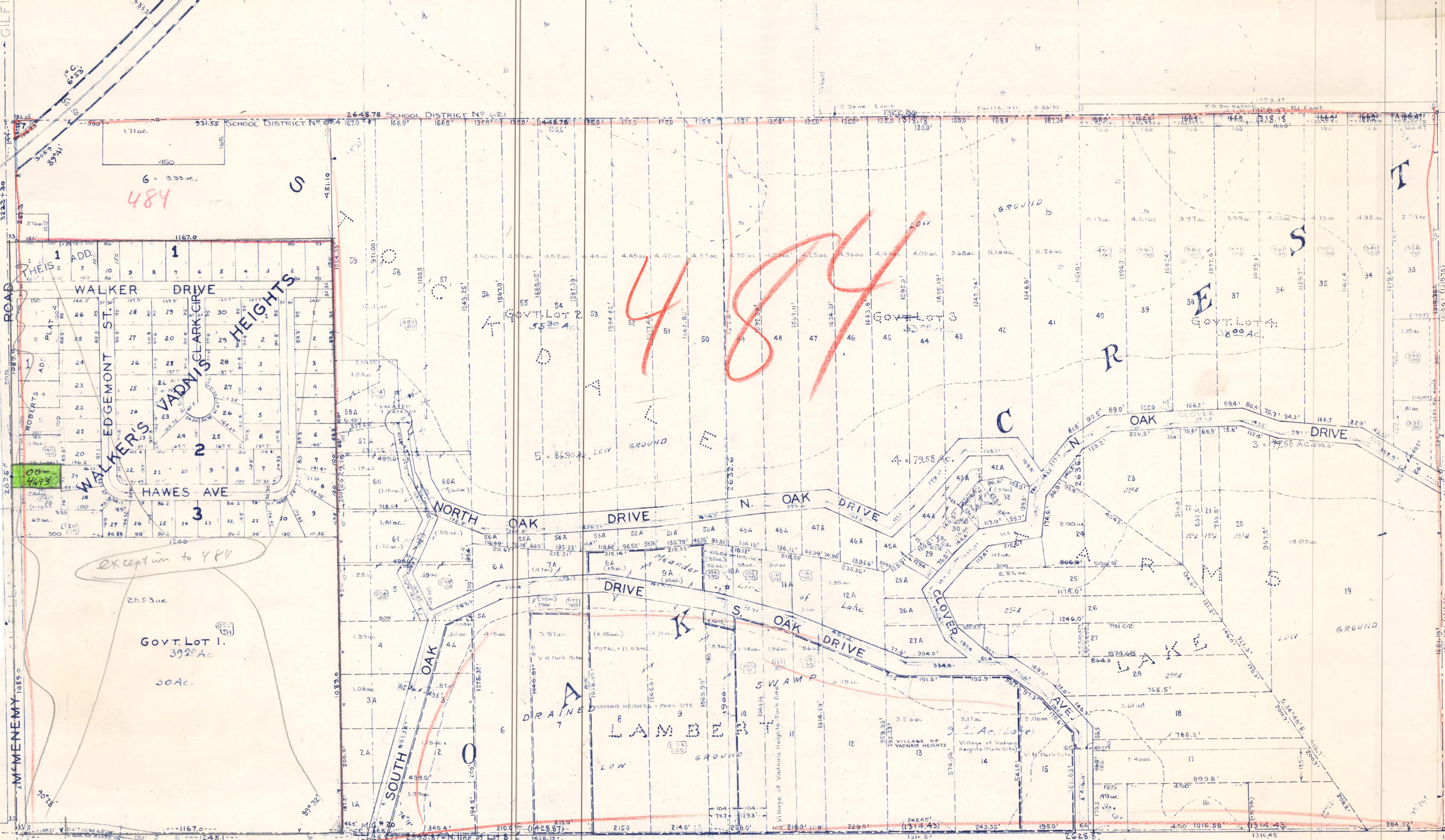


19

20-30-22  
S 1/2

20-30-22  
COUNTY ASSESSOR'S OFFICE

29



484

Exception to 484

GOVT. LOT 1.  
392.0 AC.

30 AC.

LAMB LAKES

ROAD "F"

COUNTY

ROAD

ROAD

ROAD

LAST CORR 11-7-72 EHA