

2

CITY LIMITS

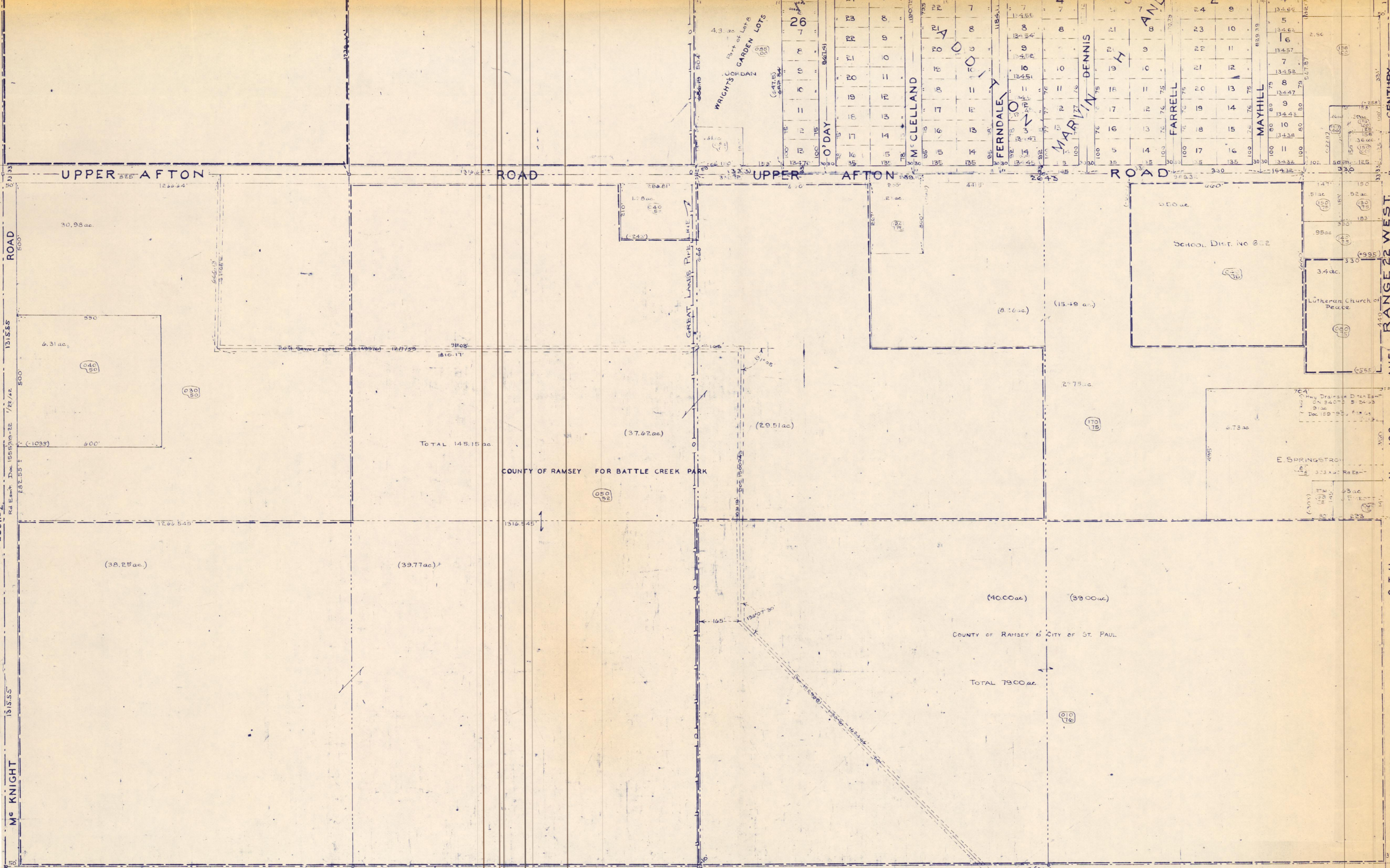
22-82-1
e/s

1-28-22

COUNTY ASSESSOR'S OFFICE

AREA & DIMENSIONS SUBJECT TO CHANGE

12



CENTURY
RANGE 22 WEST
RANGE 21 WEST
AVE. 100
No. 26337
S. T. H.
CENTURY