

N1/2 SEC. 5 T.30 R.22

IT IS NOT RESPONSIBLE FOR ANY INACCURACIES HEREIN CONTAINED.

COUNTY

ANOKA COUNTY  
RAMSEY COUNTY

LAKE

WILKINSON

(42.73 ac)

(12.57 ac)

(55.30 ac)

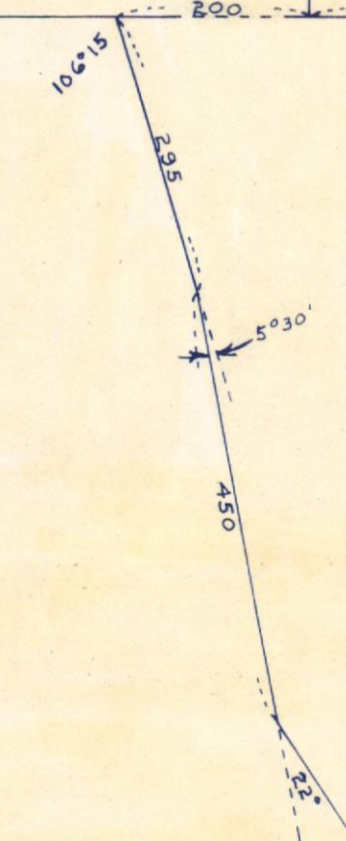
(55.30 ac)

(57.28 ac)

(25.18 ac)

TOTAL 67.91 ac

020  
63



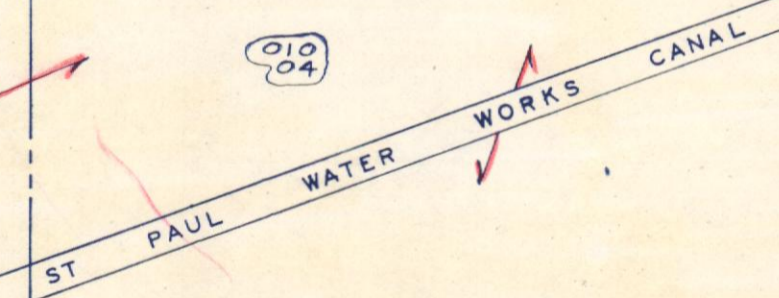
(14.82 ac)

(40 ac)

NORTH OAKS CO. INC.

398.35 ac

010  
04



(80 ac)

⑥

D E E P

L A K E

④

N1/2  
5-30-22