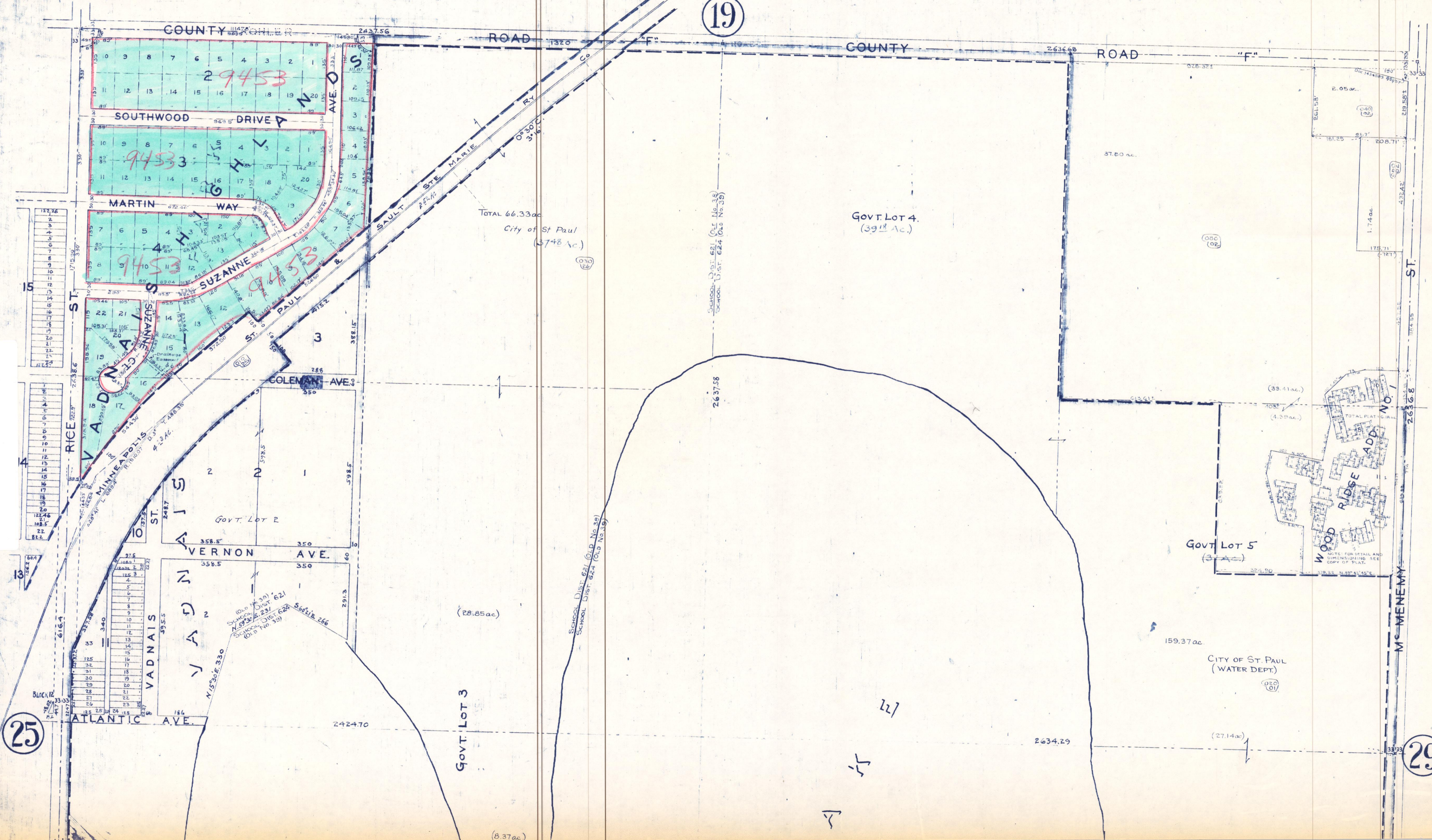


SECTION 30, T.30, R.22.

19

SD-30-22



25

29

Govt. Lot 3

11

is

T

(8.37 ac.)

(28.85 ac.)

TOTAL 66.33 ac
City of St Paul
(37.48 Ac.)

Govt. Lot 4.
(39.18 Ac.)

Govt. Lot 5
(3.33 ac.)

CITY OF ST PAUL
(WATER DEPT.)

159.37 ac.

(27.14 ac.)

2634.29

2637.58

SCHOOL DIST. 621 (OLD NO. 38)
SCHOOL DIST. 624 (OLD NO. 39)

SCHOOL DIST. 621 (OLD NO. 38)
SCHOOL DIST. 624 (OLD NO. 39)

WOOD RIDGE ADD. NO. 1

NOTE: FOR DETAIL AND DIMENSIONING SEE COPY OF PLAT.

MC MENEMY ST.

ROAD "F"

ROAD "F"

COUNTY ROAD

COUNTY ROAD

SOUTHWOOD DRIVE

MARTIN WAY

SUZANNE WAY

COLEMAN AVE.

VERNON AVE.

ATLANTIC AVE.

RICE ST.

VADNAIS ST.

VADNAIS ST.

VADNAIS ST.

VADNAIS ST.

VADNAIS ST.

VADNAIS ST.

VADNAIS ST.

VADNAIS ST.

VADNAIS ST.

VADNAIS ST.

VADNAIS ST.