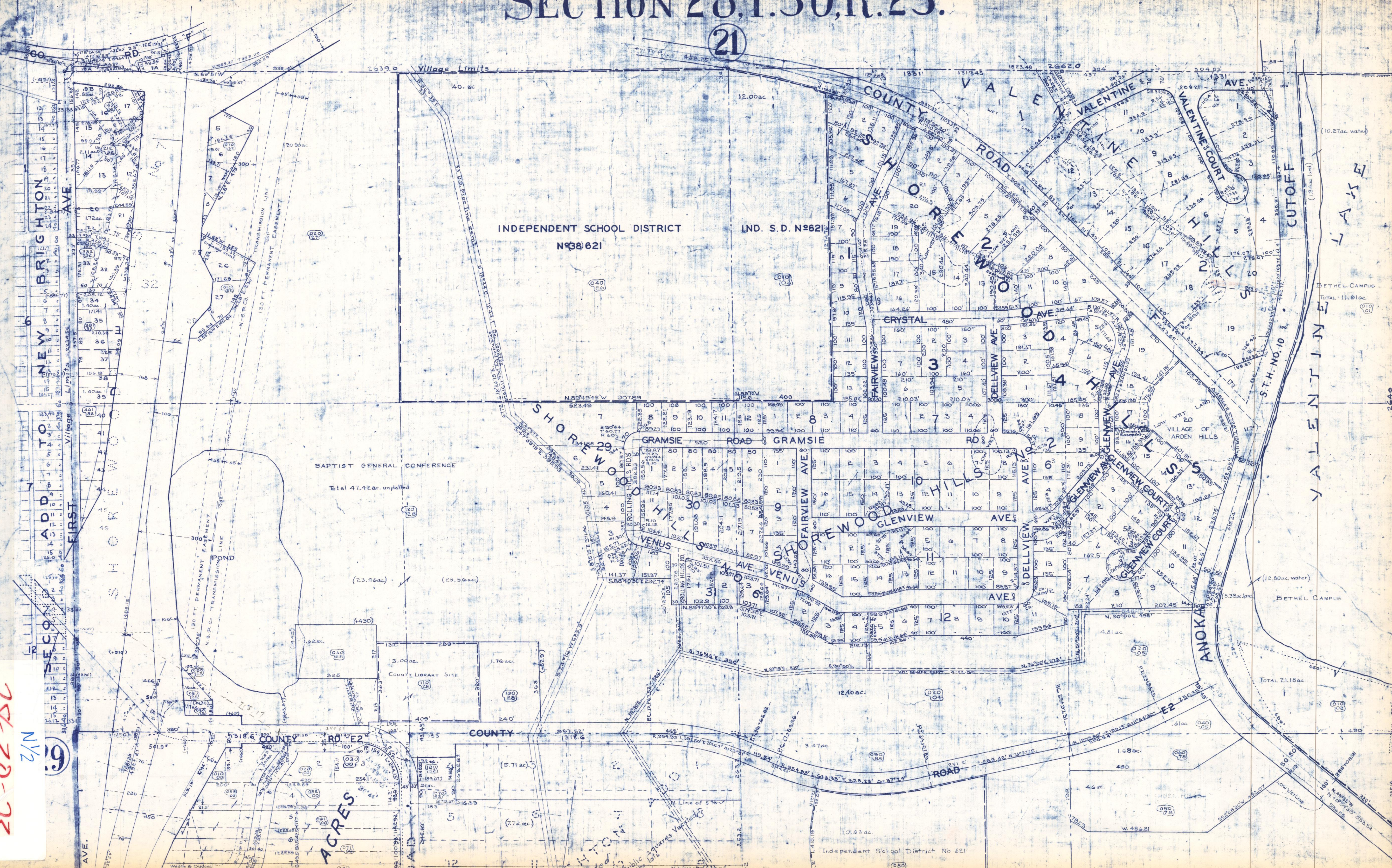


# SECTION 28.T.30,R.23.

21

28-30-23  
N 1/2  
9



INDEPENDENT SCHOOL DISTRICT  
N#38621

IND. S. D. N#621

BAPTIST GENERAL CONFERENCE  
Total 47.42 ac. unplatted

COUNTY LIBRARY SITE

40 ACRES

Independent School District No. 621

CUTOFF

VALLEY

BETHEL CAMPUS

BETHEL CAMPUS

TOTAL 21.18 ac.

TOTAL 11.61 ac.

(10.27 ac. water)

(1.34 ac. land)

(12.80 ac. water)

(6.38 ac. land)