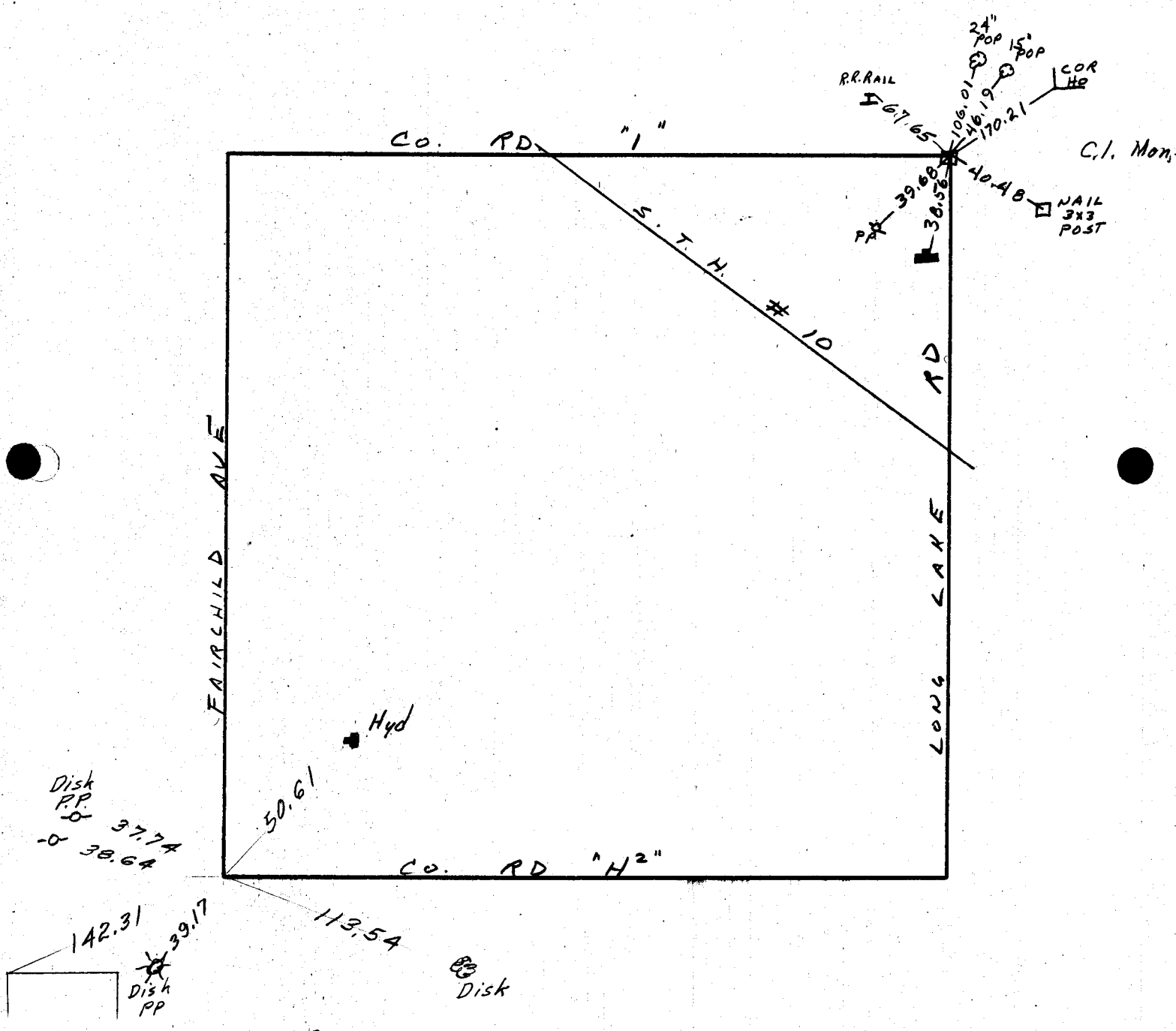


NE 1/4, SEC. 7, TWP. 30, RGE. 23



FAIRCHILD AVE

CO. RD "1"

S.T.H. # 10

LONG LAKE RD

CO. RD "H2"

Hyd

R.R. RAIL

C.I. Mon.

NAIL 3x3 POST

Disk P.P.
37.74
38.64

142.31
39.17

Disk P.P.

Disk

50.61

113.54

67.65

39.68

30.56

24"

POP

15'

POP

COR

H2

106.01

46.19

170.21

40.48