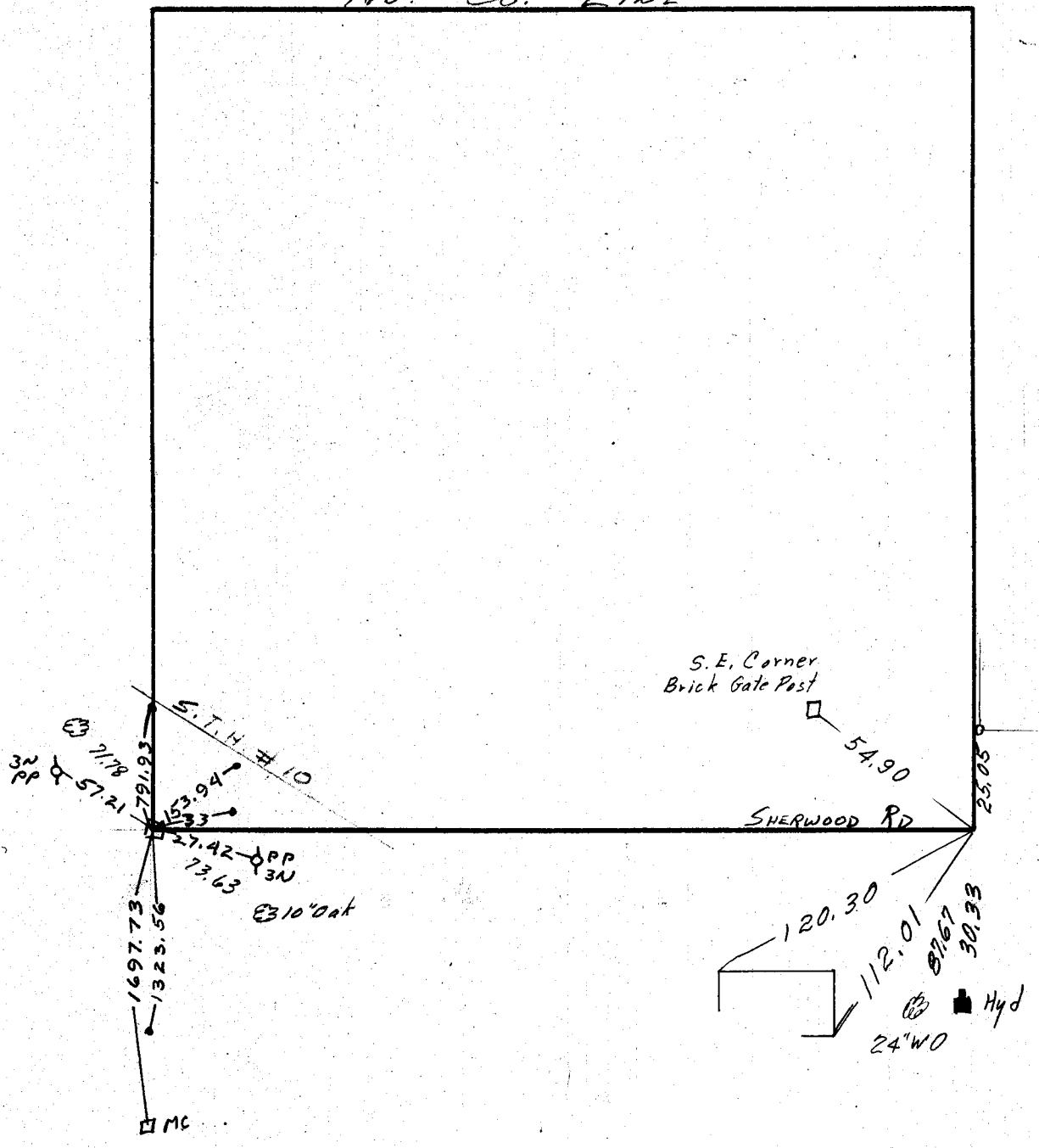


NW 1/4, SEC. 6, TWP. 30, RGE. 23

No. Co. LINE



S.E. Corner
Brick Gate Post

SHERWOOD RD

C.I. Mon.

32
PP

310' Oak

Hyd

24'WO

MC

S.T.H. #10

3N

54.90

25.05

120.30

112.01

89.67

30.33

1697.73

1323.56

71.78

57.21

791.93

153.94

27.42

73.63