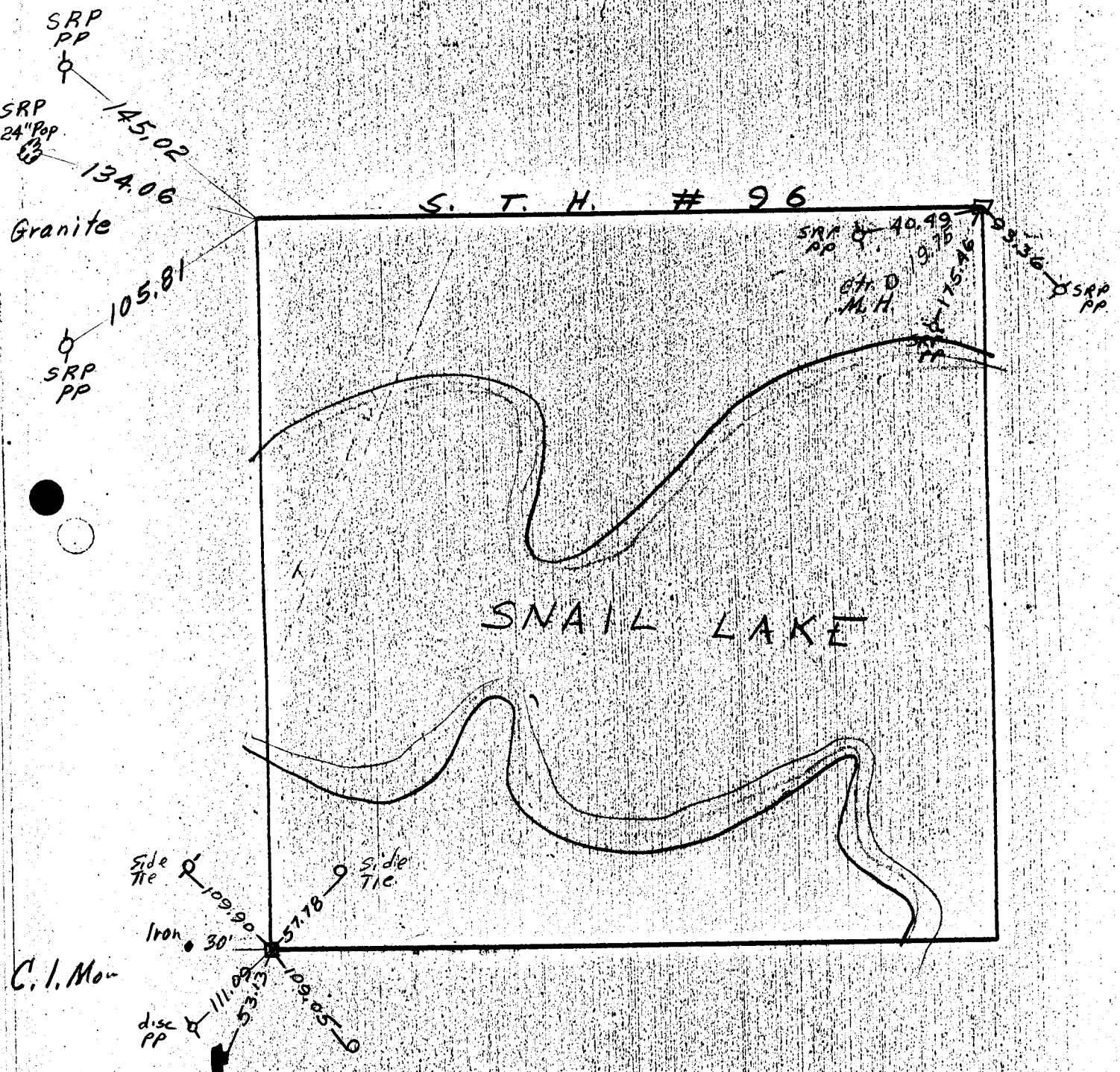


NE 1/4, SEC. 23, TWP. 30, RGE. 23



S. T. H. # 96

SNAIL LAKE

SRP PP
SRP 24" Pop.
Granite
145.02
134.06
105.81
SRP PP

SRP PP 40.49
19.75
175.46
99.36
SRP PP
G.H. D.
M.H.

C. I. Mon
Side Tie 109.90
Iron 30'
disc PP 111.08
53.13
57.78
Side Tie
109.66
15.51