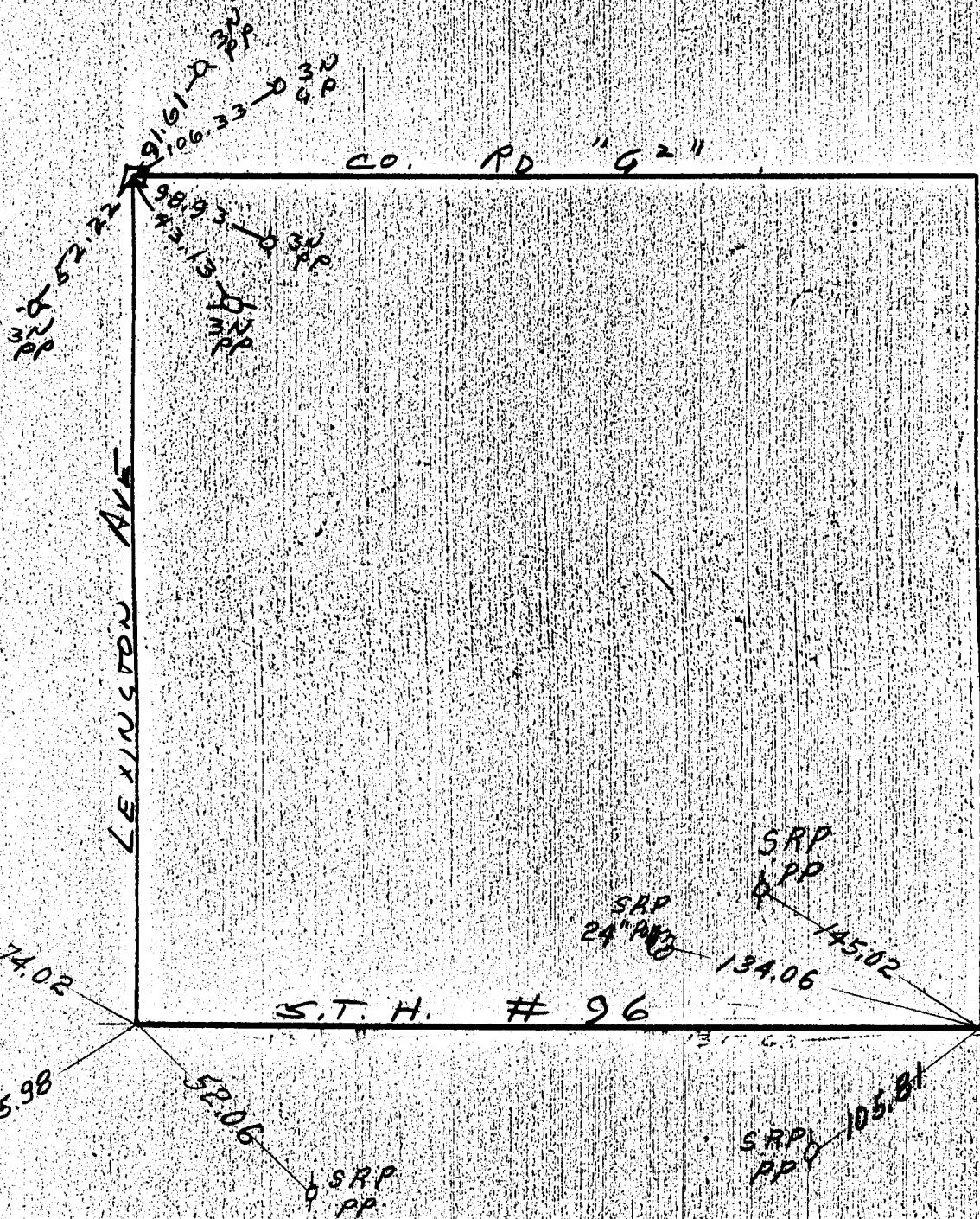


SW 1/4, SEC. 14, TWP. 30, RGE. 23



CO. RD "G2"

LEXINGTON AVE

S.T.H. # 96

Granite

SRP
H.P. 74.02
Iron over
Granite

SRP
PP 145.02
SRP
24" PWD 134.06

SRP
PP 135.98
52.06
SRP
PP

SRP
PP 105.81

91.61
98.93
74.02
SRP
PP
SRP
PP
SRP
PP
SRP
PP