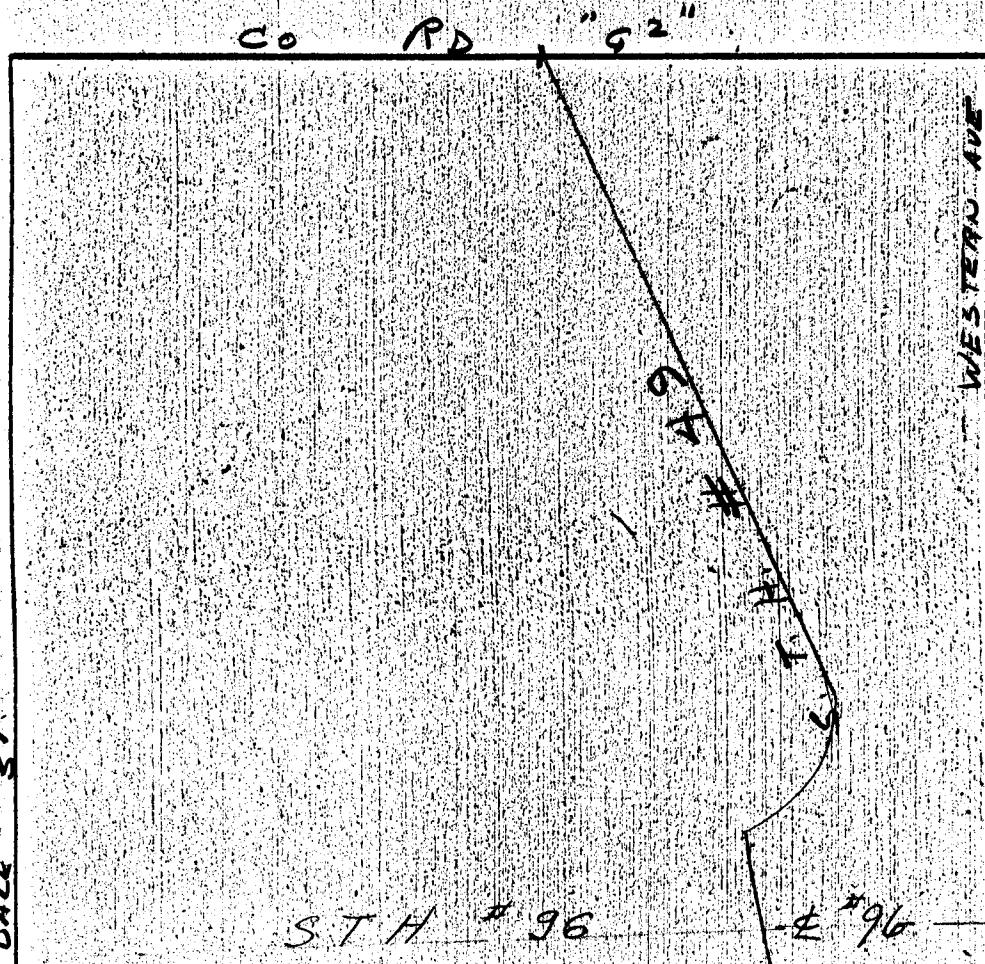


SW 1/4, SEC. 13, TWP. 30, RGE. 23



C. I. Mon.

SRP 40.49
PP 0.91
M.H. 175.26
93.36
SRP
PP

3/4" Iron Pin
SRP 24'0" at
Iron
SRP 24'0" at
63.15
58.97
65.50
SRP 28'0" at