

NE 1/4, SEC. 27, TWP. 30, RGE. 22

1939
Oak Stump
π 84.45

Fence Post
18.82

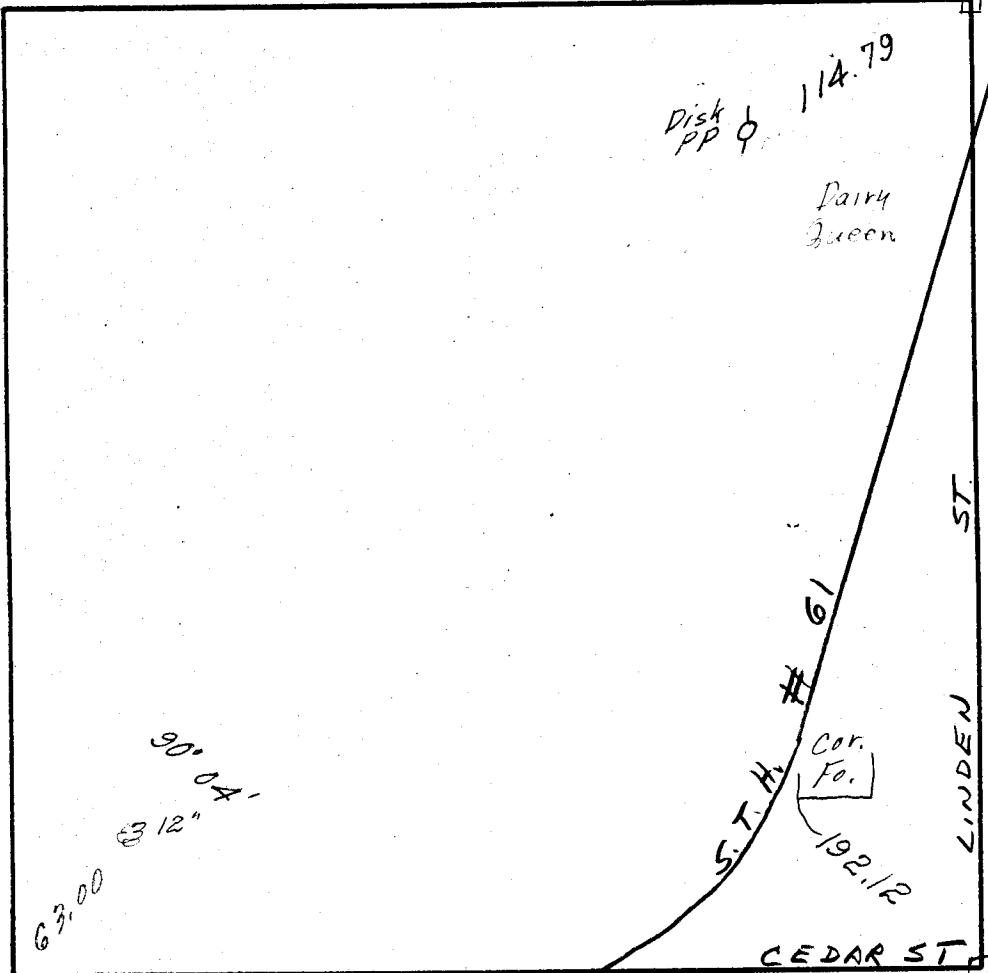
12" Elm
54.78

Cor House

81.95
99.42
Disk PP

GRANITE

76.15
68.83
Disk PP
15" Oak



Disk PP
114.79
Dairy Queen

S.T.H. # 61
Cor. Fo.
192.12

LINDEN ST

CEDAR ST

52.93
Hyd
134.68'
Cor. Fo.

1940
Iron
127.15

63.00

90° 04'
3 12"

M-2634.98

68.64

In Low Spot

Beware
2 Corner
Locations

Cor Foundation