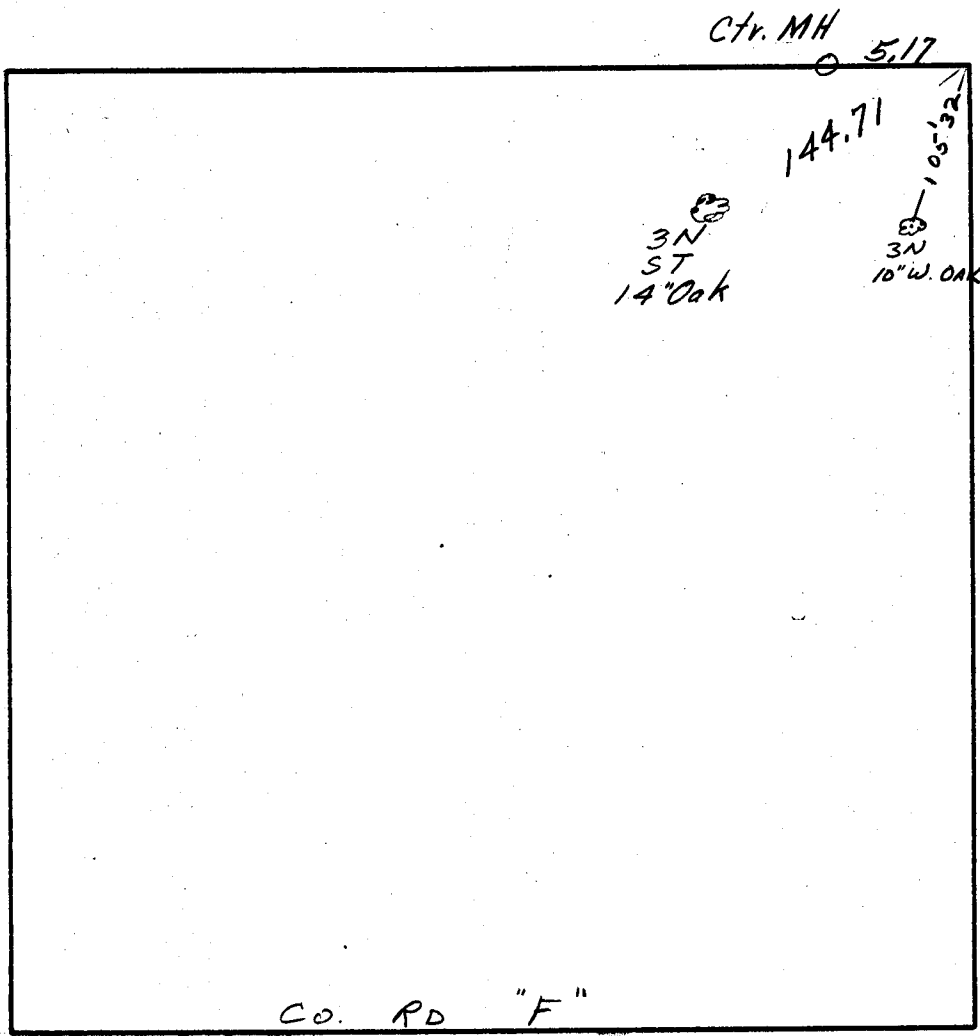


SE 1/4, SEC. 20, TWP. 30, RGE. 22

Dec. 18, 1972



Ctr. MH 5.17

C.I. Mon.

144.71

9.1.18
11.1.10

Roofing Nail
* 2" NP

3N
ST
14" Oak

3N
10" W. OAK

*
3N
Side Tie
2" NP

Co. RD "F"