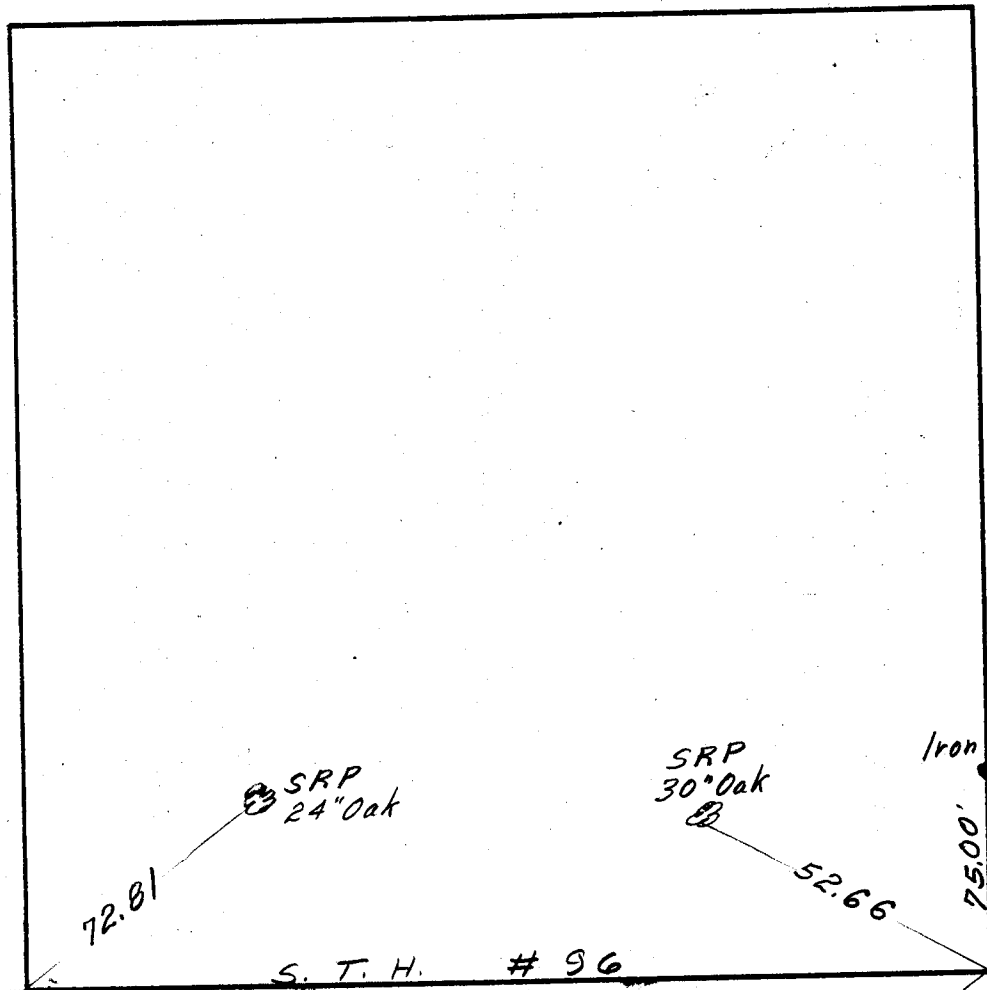


SE 1/4, SEC. 18, TWP. 30, RGE. 22



2" Iron pipe  
With Cap  
72.35

SRP  
26" Tw Pop

center punch Mark  
in 4" No Boating Sign

SRP  
24" Oak

72.81

S. T. H. # 96

SRP  
30" Oak

52.66

Iron Pipe

75.00'

Granite

50.86 SRP  
Lt. P

PK nail in Conc.  
Top Wall 3' From  
E. End

72.88

76.62  
SRP  
PP

Mc Menemy