

WEST 1/4 COR. SEC. 11-30-23

MONU. NO. 84

Found granite down 0.43 ft. Set short (4 3/8") cast iron. 7-16-75 Retied 7-28-75

Removed short cast iron for Const. Dept. Granite destroyed. 4-30-90

Set 20" cast iron monu. 8-21-91 Tied monu. & cemented top. 8-29-91

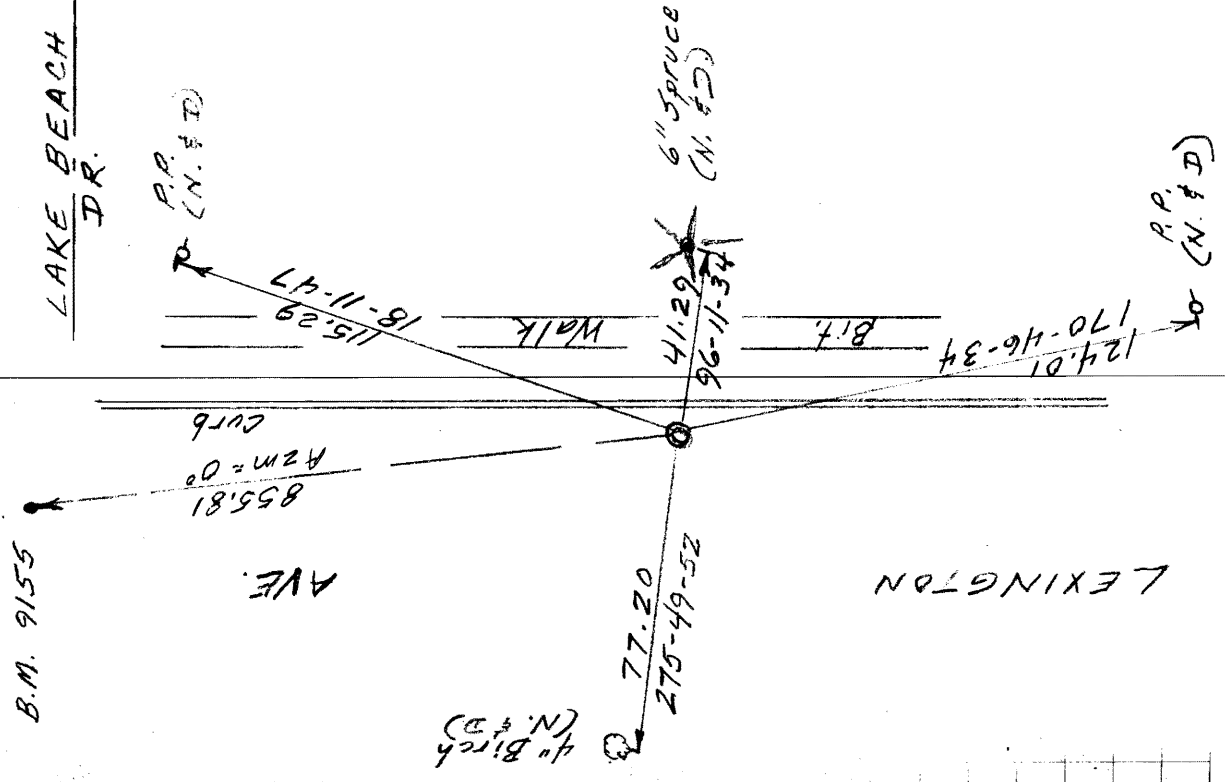
Removed & lowered C.I., set 12" tube for monu. 4-30-02

Set 12" MH assembly 5-14-02

Retied monu. 11-22-02

Retied monu. 06-28-07

LAKE BEACH DR.



B.M. 9155

AVE.

LEXINGTON

4" Birch (N. & D)

77.20
270-49-52

41.29
96-11-37
6" Spruce (N. & D)

P.P. (N. & D)