

5 1/4 Cor. SEC. 1, T30, R22
MONU. NO. 74

Found granite monu up 0.8 ft;
retied. 1976

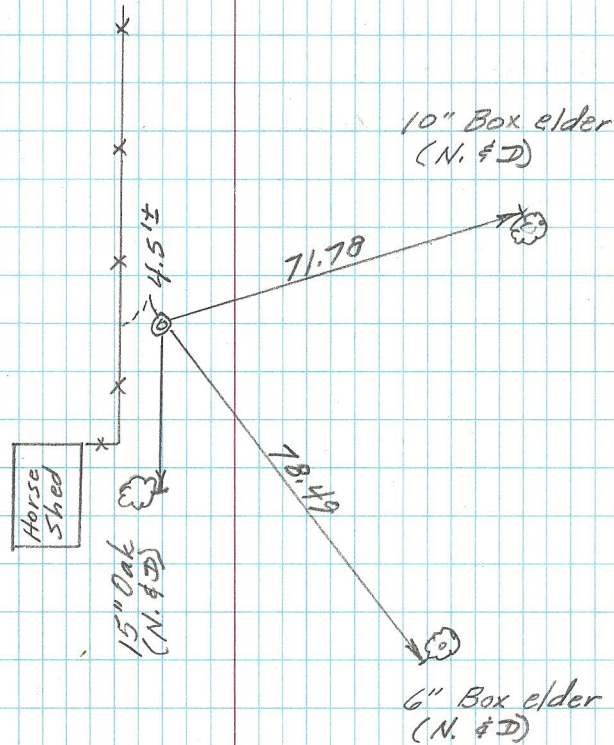
Destroyed by sewer const (1980-81).
Replaced monu. with 20" cast iron.
and retied. July 1981

Found landscape timbers $\frac{1}{2}$ 1.5'± earth
over monu. 8-15-92

Letter sent to homeowner to remove
landscape material in file; (12-30-22)
11-17-92

Found landscape timbers, etc. still
in place. 5- -93

Found C.I.M., down $\frac{1}{2}$ -1 ft, placed a sign and
post $\frac{1}{4}$ -0.80 ft north of monu; retied 9-26-11



No # 2499
Taylor A.