

EAST 1/4 COR. SEC. 12-28-22  
MONU. NO. 670

Found Cast Iron down 1";  
re-tied Aug. 5, 1974.

DUG FOR GRANITE DEC. 26, 1974  
HOLE WAS 3 FEET LONG (N & S), 3  
FEET WIDE (E & W) AND 5' DEEP,  
HIT NATURAL GROUND @ approx.  
3 1/2 FEET, FOUND NOTHING.

Digging done by Wash. Co. Surv. office.  
Set C.I. at old position.

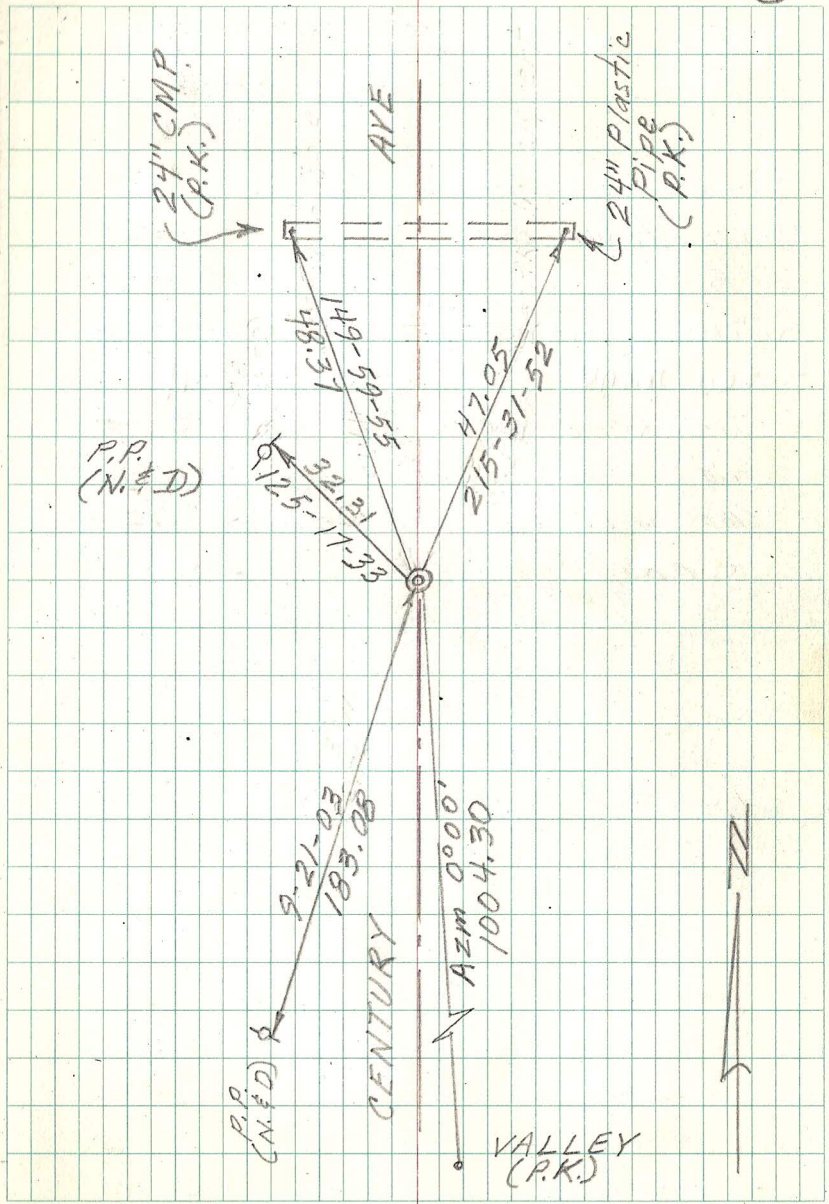
Re-set Washing Co. Menu. to fit field stone  
at 1/4 cor. W. of E 1/4 corner and  
retied menu. April 12, 1976.

Retied monu. 4-10-01

TIED OUT MONT FOR REMOVAL DURING ROAD

RECONSTRUCTION ROAD 10-14-08  
MONUMENT REMOVED CONSTRUCTION 6-09

See back of book for 670 Continued  
after 762N



MON 670N  
BACK of BOOK