

N¹/₄ COR. SEC. 12-28-22
 MONU. NO. 646

Found granite monu. flush and
 re-tied. Aug. 2, 1974.

RE-TIED 28-AUG-1996 GRANITE
 UP 1 FT. SET SIGN + POST 5.2' FT.

NE OF GRANITE 8-28-96

RETIED MONT 10-06-06

Retied monu. 6-3-11

Found Bin-by-Bin. granite monument up 0.75ft.
 leaning easterly 1/2 ft. (No ties remain from
 Oct. 6, 2006 ties, 5-17-13

Based on historical reference tie comparisons
 to an Oak tree dating back to 1939,
 it appears the granite monument was
 disturbed (and the Oak reference tie
 destroyed) sometime after October, 2006.

Oct. 1939 tie to 6in. Oak = 31.70

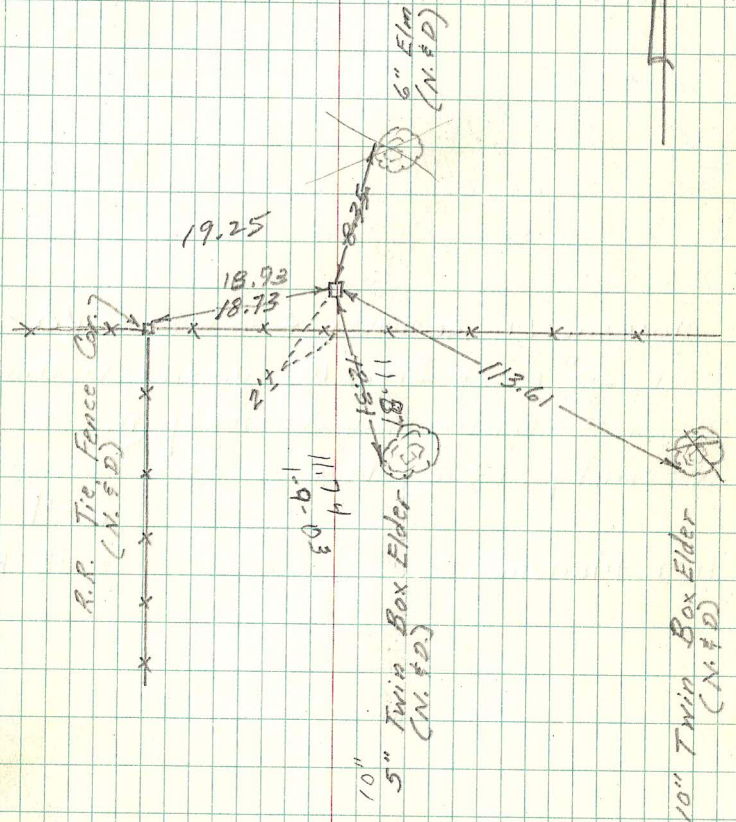
Oct. 2006 tie to 12in. Oak = 31.73

The undisturbed granite monument was located
 by conventional survey traverse methods, and
 coordinates established, as part of the County
 wide traverse in +/- 1900. Analyzed, checked and
 tied into conventional survey traverse network
 to verify the published coordinate location prior
 to being disturbed and established reference
 ties as shown on CERT. OF LOCATION 5-8-2013

9-22-88 visit

5.2

646



checked position of straightened monument
 relative to 1990 traverse points using
 static GPS, 5-10-2013

MON 645N
 BACK of BOOK