

SW COR. SEC. 1, T28, R22
 MONU. No. 645

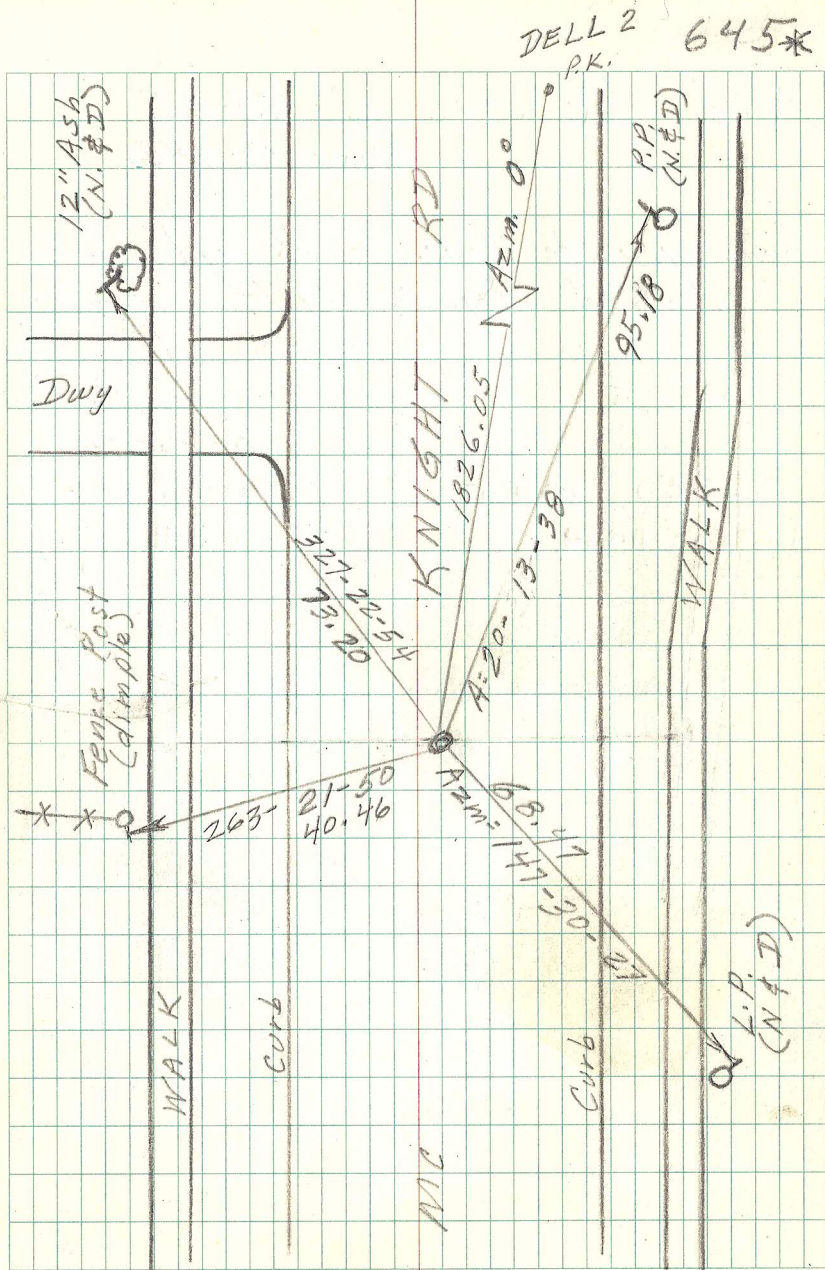
Found cast iron set by St. Paul.
 Tied monu. for Maint. 5-18-98

Removed C.I. for Maint.

Found 1 1/2" iron down 2.3 ft from road
 surface and 0.5 ft. S.S.W.; set 20"
 C.I. & MH. at tie location. 8-27-98

RETIED MONT 7-21-06

Retied monu. 6-6-11



* MON 645N
 BACK OF BOOK