

WEST 1/4 COR. SEC. 1, T28, R22
MONU. No. 622

CAST Iron monu. set to grade by St. Paul.
Retied Sept. 16, 1938.

Tied monu., Maint Dept, 5-15-98

Removed short C.I. piece in conc. set
on top of granite.

Set MH over granite. 8-27-98

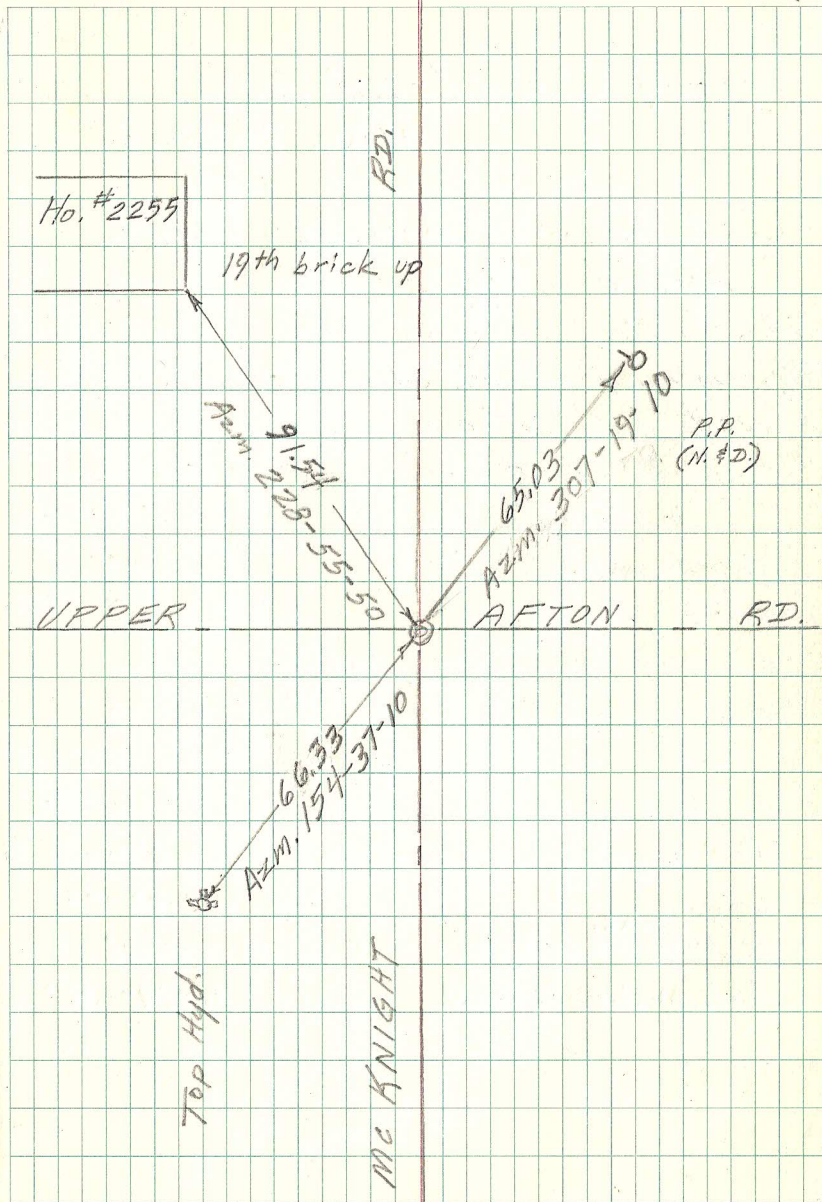
RETIED MONT

7-21-06

Retied monu.

6-6-11

622



MON 621X
BACK of BOOK