

E 1/4 COR. SEC. 25, T29, R22

MONU. No. 532

Found iron over granite. Granite
down $1.0 \pm$ ft. Placed 10 inch
cast iron monu. 7-30-75

Re-tied monu. Feb. 20, 1976.

Retied monu. down 0.15 ft. 9-24-93

REMOVED 10" CAST IRON MONT. FOR
ROAD MILLING PROJECT. PLACE
MANHOLE ASSEMBLY OVER GRANITE
MONT.

6-2005

RETIED MONT

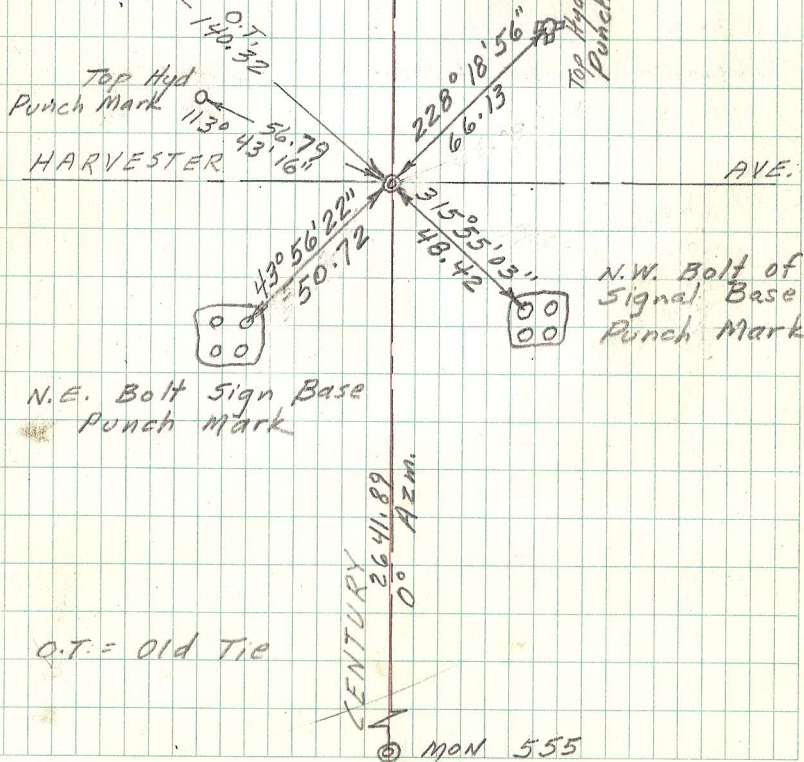
7-20-06

Retied mont

6-7-11

532

1-5-F
Mo. #
967



N.E. Bolt Sign Base
Punch Mark

N.W. Bolt of
Signal Base
Punch Mark

O.T. = Old Tie

MON 555