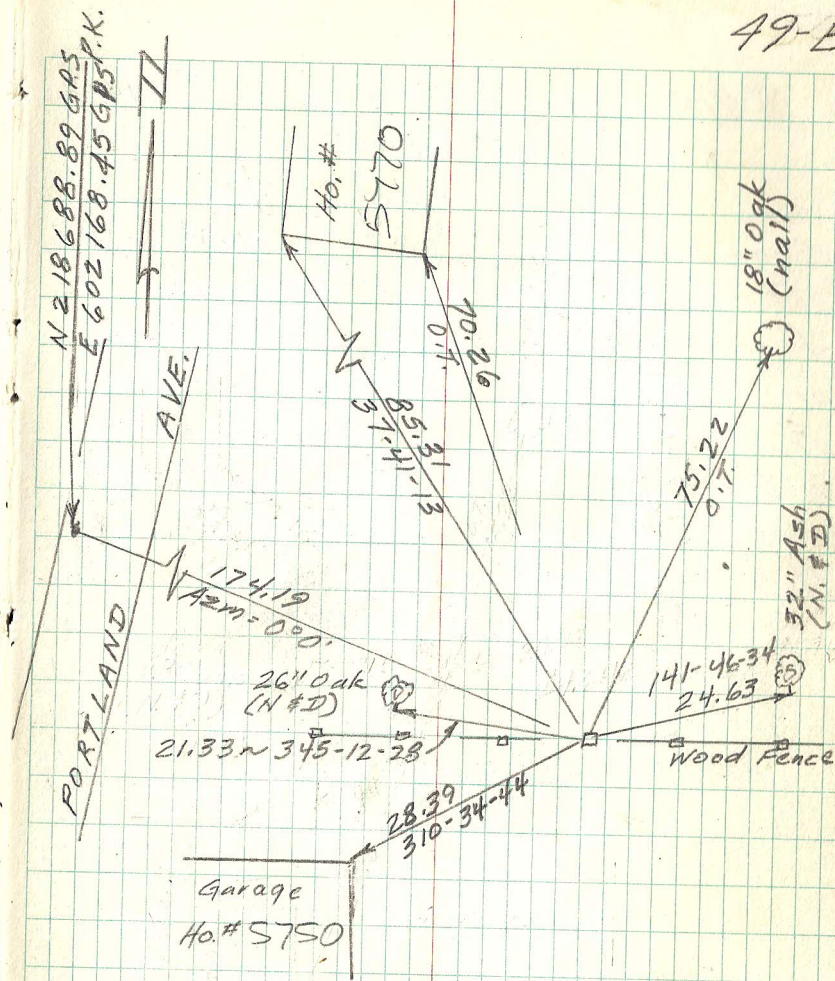


MONU. ON EAST & WEST 1/4
 LINE EAST OF CENTER
 SECTION 1, T30, R22.
 MONU. No. 49-E

Found granite monu. down 0.6
 ft.; retied. 1976
 Retied monu. down 0.3⁺ ft. 12-21-92
 Retied monu. 7-30-03
 Retied monu. 9-26-11

49-E



O.T. = Old Tie