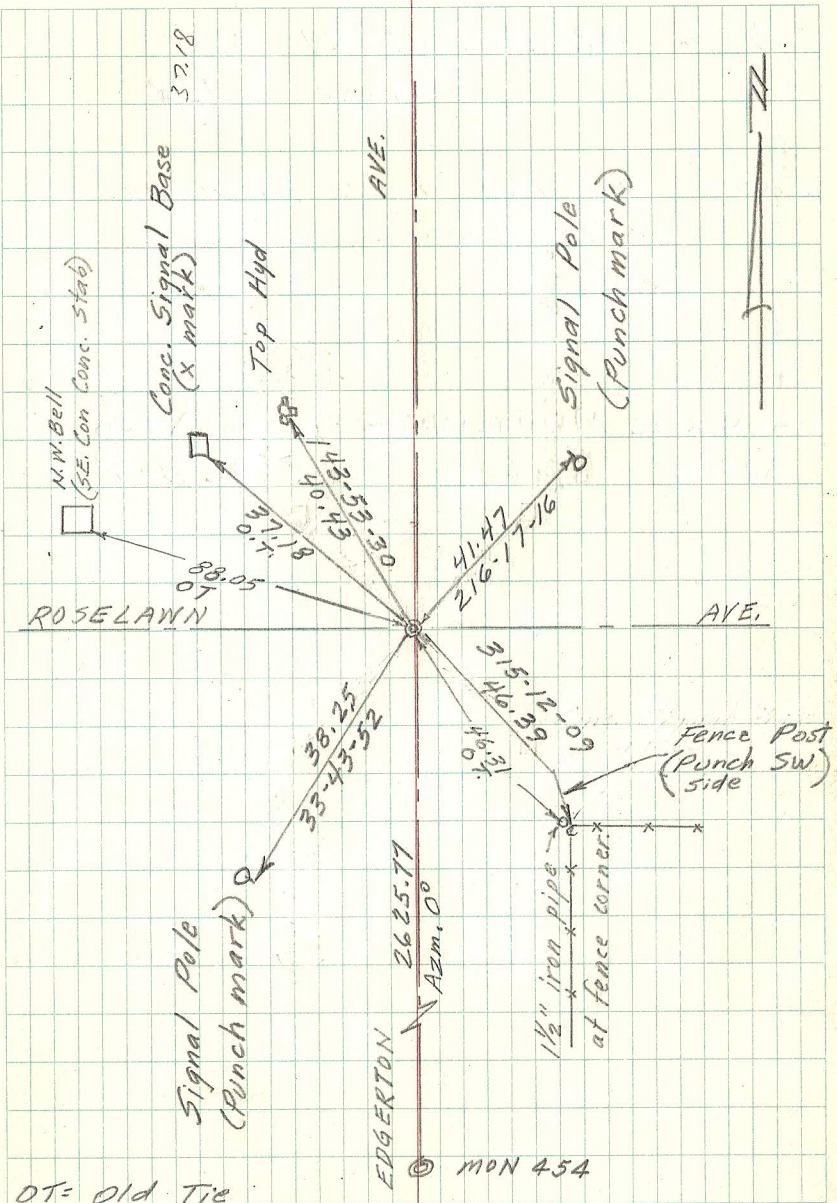


CENTER SEC. 17-29-22
MONU. NO. 431

Found 1/4" dia. 5" long brass rod.
Placed P.K's. and dug 3 1/2
ft. Found nothing. Sept. 3, 1974.
Used old ties and placed 20"
cast iron monu. flush. Road
has approx. 2" blacktop over
conc. road. Re-tied Sept. 20, 1974.
Place full 20" cast iron monu. and
re-tied Sept. 20, 1974.

- Removed 20" C.I. 6-15-90
- Placed 20" C.I. 10-26-90
- Cemented top in. 10-19-93
- Retied monu. 7-8-02
- Retied monu. 8-22-07

Found C.I.M. with top broken off, checked local
ties to center of shaft. Offset monument for
removal during road reconstruction 6-28-12
Set a 20 in. Ramsey County C.I.M. in
C.I.M. H. assembly and tied 8-23-12



OT = Old Tie