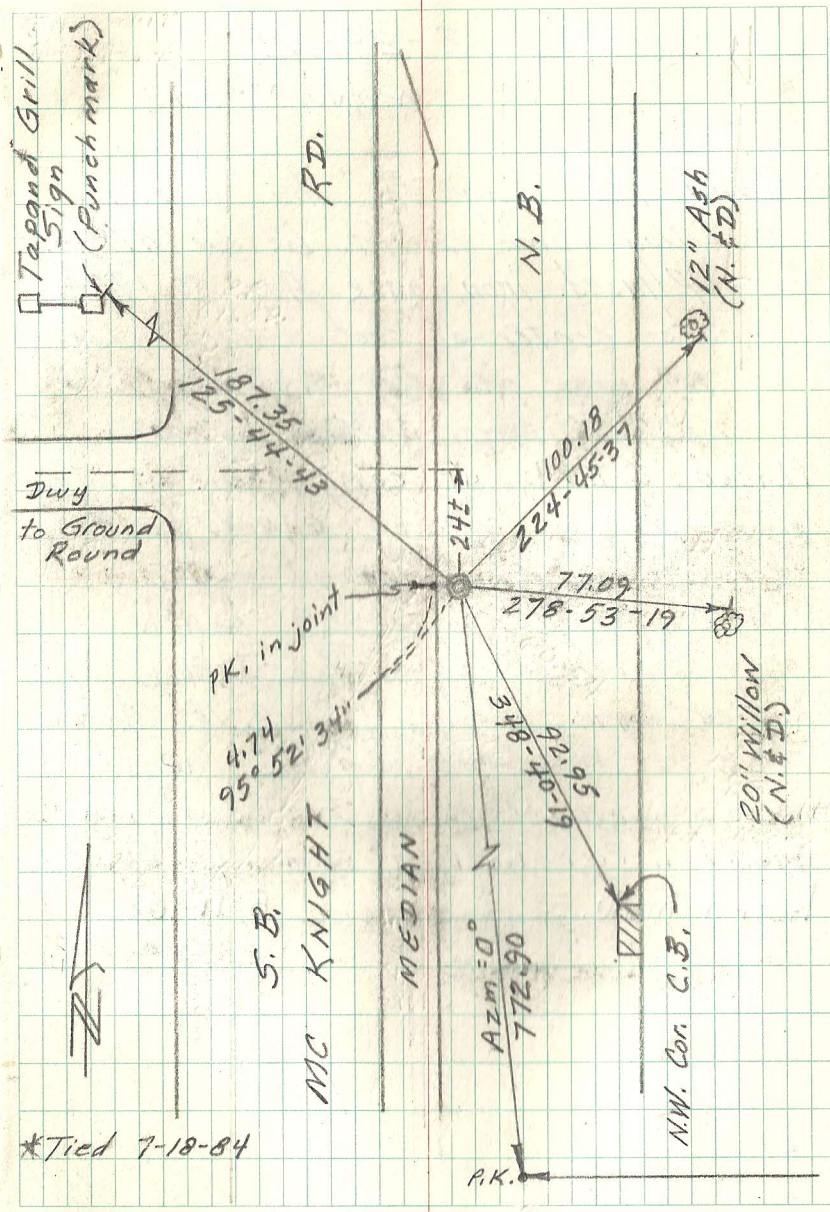


E 1/4 Cor. Sec. 11, T29, R22
MONU. NO. 392

Found 1" iron, 18" long flush
and cast iron monu. See
Survey Book No. 3, pages 6, 7 & 8.
Also see Doc. 1975519 in County
Recorder's Office by John Turpin. 4-1976
Placed cast iron monu. April 30, 1976.
Re-tied monu. *7-18-84
Retied monu. (need bit) Aug. 9, 1990.
Retied monu. (need bit) 4-10-03

TIED OUT MONUMENT FOR REMOVAL
DURING ROAD RECONSTRUCTION 11-08-06

SET PK NAIL AT CORNER POSITION 5-05-08
RESET CI monument DOWN 8", CONTRACTOR TO
SET MANHOLE ASSEMBLY 6-09-08
TIED MONUMENT 10-17-08
Found Ramsey County, C.I.M. in limit
assembly, down 0.6 FT, checked conditions
of ties. 5-8-13



*Tied 7-18-84