

N 1/4 COR. SEC. 9-29-23

MONU. NO. 352

Found granite down 0.25 ft.

and tied out July 24, 1974.

Granite removed by road construction.

Replaced with cast iron 5-8-75.

Retied monu. 1981.

Checked tie. 1-16-91

Retied monu. 9-13-00

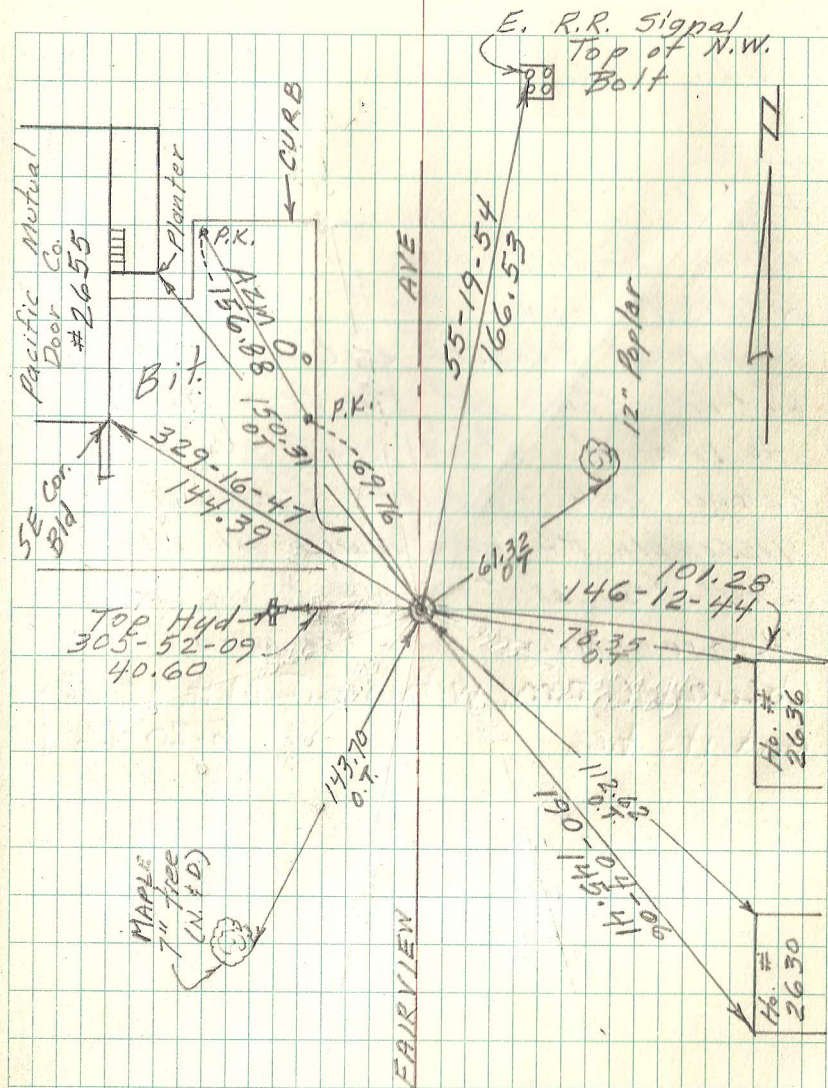
Monu. Removed by Construction Activity.

Monu. Tied out previously for Removal.

Replaced Monu. and Retied out

Sept 30, 2005

Retied monu. 7-28-10



OT = old tie
not checked