

CENTER SEC. 4-29-23

MONU. NO. 329

Found granite down 1" and  
re-tied July 23, 1974.

Granite removed by road construction.

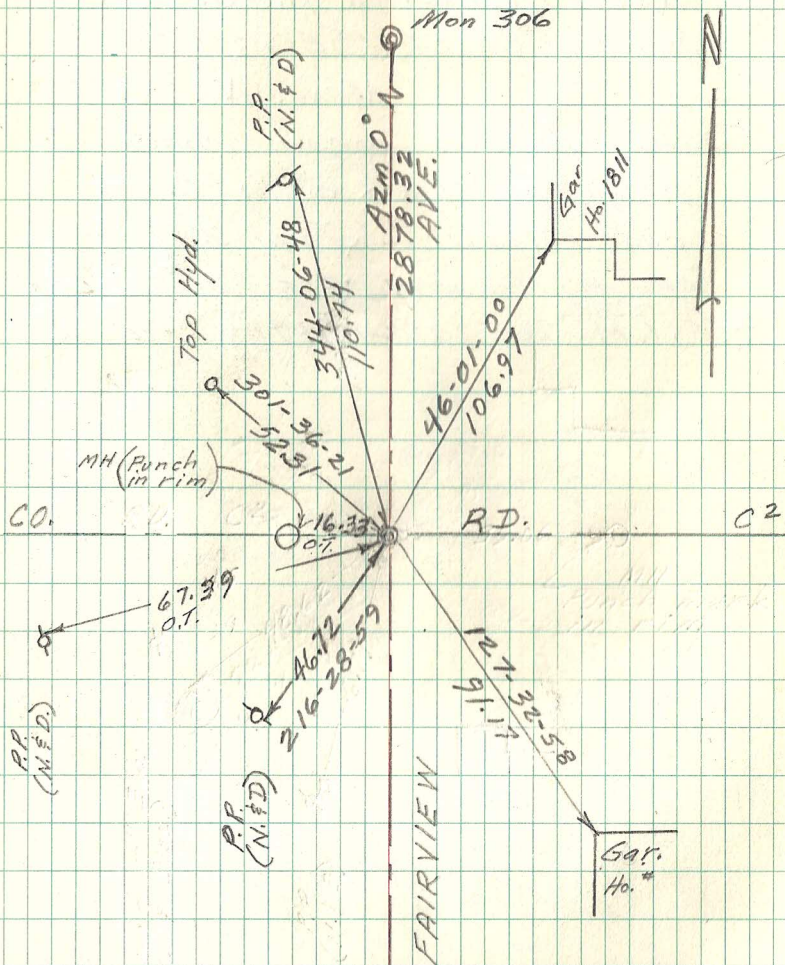
Replaced with cast iron 5-8-75.

Retied monu. Aug. 14, 1990

Retied monu. 7-16-02

Retied monu. 08-02-07

Checked condition of C.T.M. down 0.25ft,  
and its ties 6-7-12



OT = Old Tie