

REFERENCE CORNER ON LINE  
 TO CENTER SECTION 36-30-22  
 S<sup>1</sup>/<sub>4</sub> CORNER MONU. 324 N  
 m.d. 2-05-08

3/4" iron pin set by Mondot to  
 reference line and S<sup>1</sup>/<sub>4</sub> corner  
 of Sec. 36. Aug 1970.

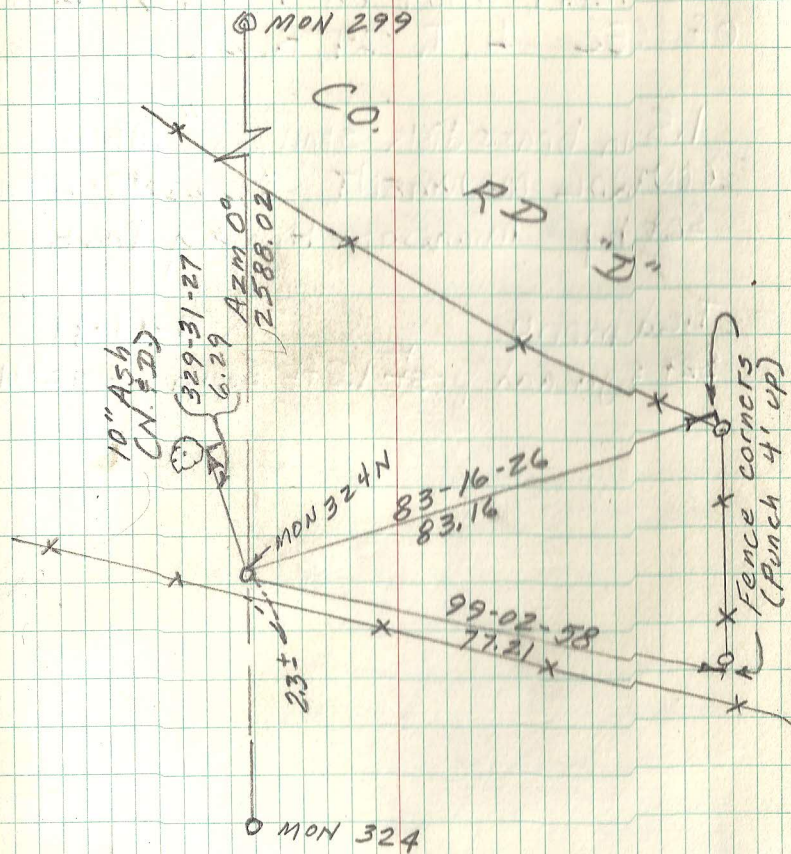
Tied monu. 9-30-99

RETIED MONT 6-21-06

Retied monu. 7-1-11

Set sign and post 1/2 ft South 8-12-11

324 N



6 9 4