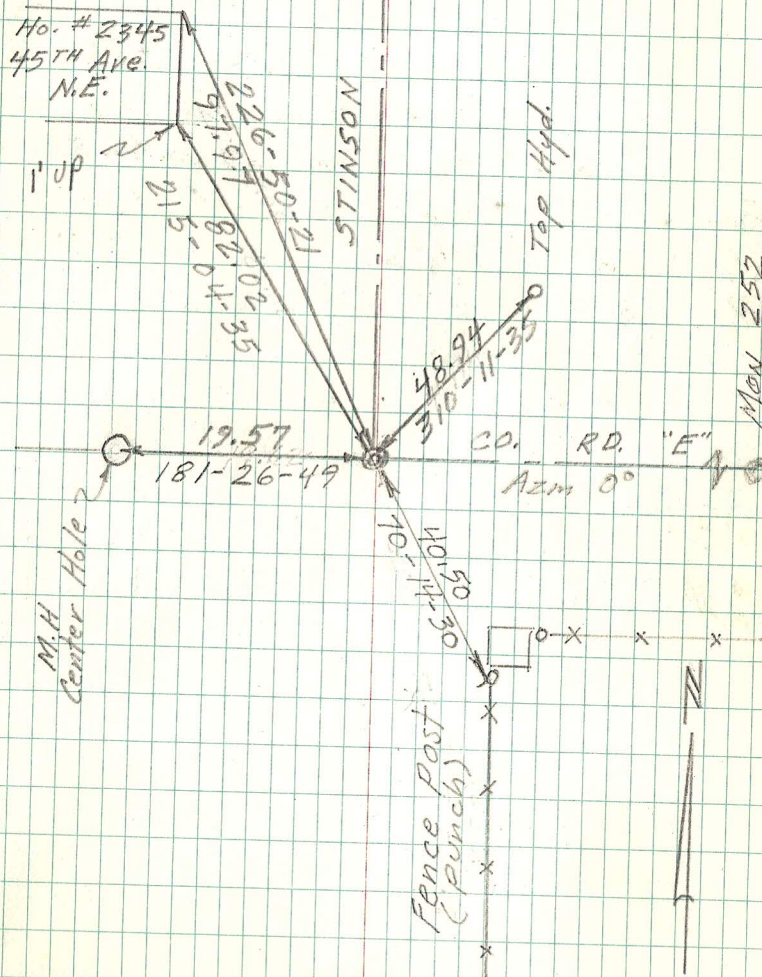


S.W. COR. SEC. 30-30-23
 Monu. No. 251

Found granite monu. down $7\frac{1}{4}$ "
 and re-tied July 12, 1974
 Placed short cast iron monu. 7-17-75.
 Removed cast iron ($4\frac{5}{8}$). 5-7-90
 Replaced $4\frac{5}{8}$ " cast iron & re-tied. 7-12-90
 Retied 7-31-98
 Retied 10/24/05
 Retied monu. 7-23-10



Mon 252