

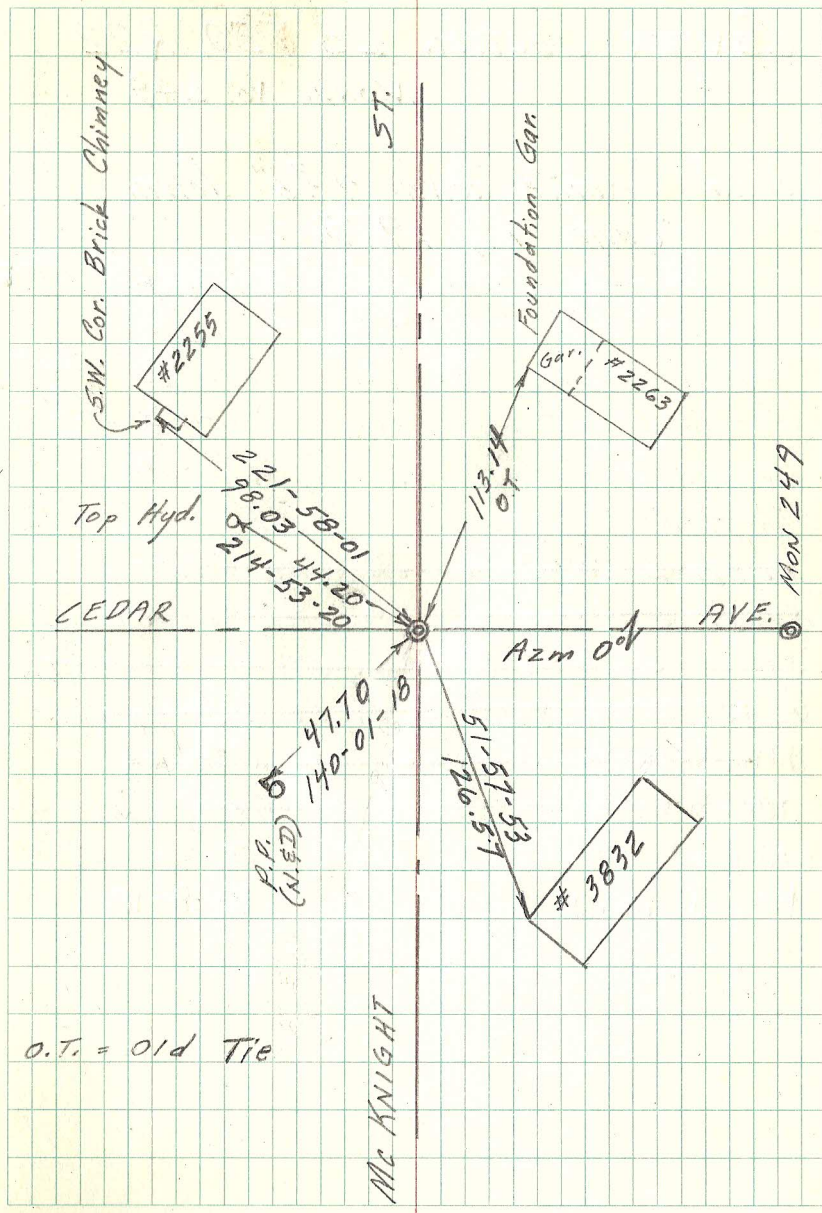
E 1/4 COR. SEC. 26, T30, R22
MONU. No. 248

Found P.K. and common nail. Dug
1 ft. sq. 3.7 ft. deep. Found
nothing. May 20, 1975.
Placed cast iron monu. 0.02 ft. north
and 0.13 ft east. June 12, 1975.

Re-tied monu. Feb. 12, 1976.
Re-tied monu. 6-21-91
Retied. 11-17-98

Misument lowered and Manhole Assembly
placed over Top for Mill and Overlay
Project 7/18/05

Retico Mont ... 7-28-05
Retied monu. 6-28-10



O.T. = Old Tie