

N 1/4 COR. SEC. 4, T30N, R22W
 MONU. NO. 185P (185C)

Found granite monu. down 0.2'. 4-15-74

Retied 7-3-74

Set C.I. cap over granite.

C.I. cap missing. 11-02-88

Granite ground down by Const. Dept 10-10-91

Drilled hole in granite; down 0.3' 11-22-92

Set 20" C.I. marked "3RD CORR. LINE"

1.99 feet S. of closing corner

(granite monu.) 185C 7-26-95

Found granite; 20" C.I. (185P) gone. 6-17-98

Set 20" C.I. (185P) in MM down 18"±.

8- -99

Retied 185P 11-15-99

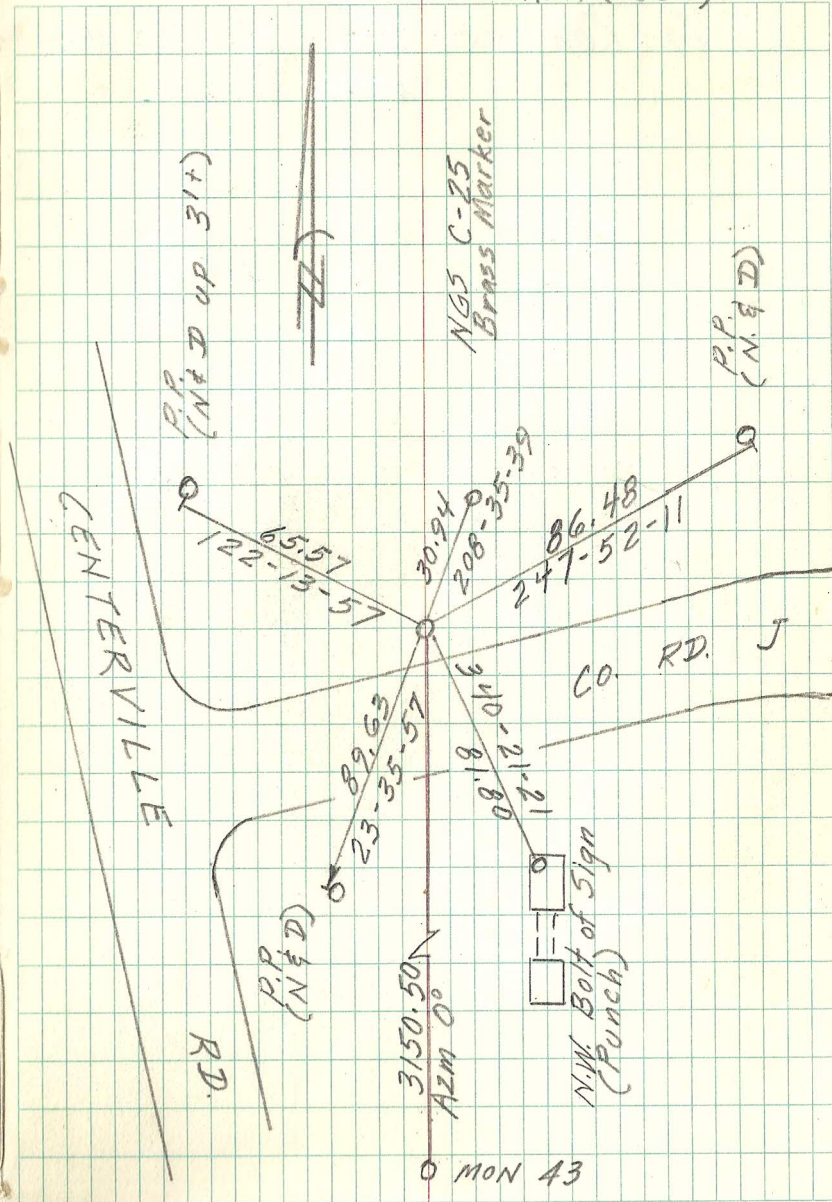
Drilled hole in granite (down 0.4±') and in

cast iron monu. 10-14-03

Retied 6/16/2004

RETIED MONUMENT 185C 9-04-09

185P
 AKA (185C)



0 MON 43