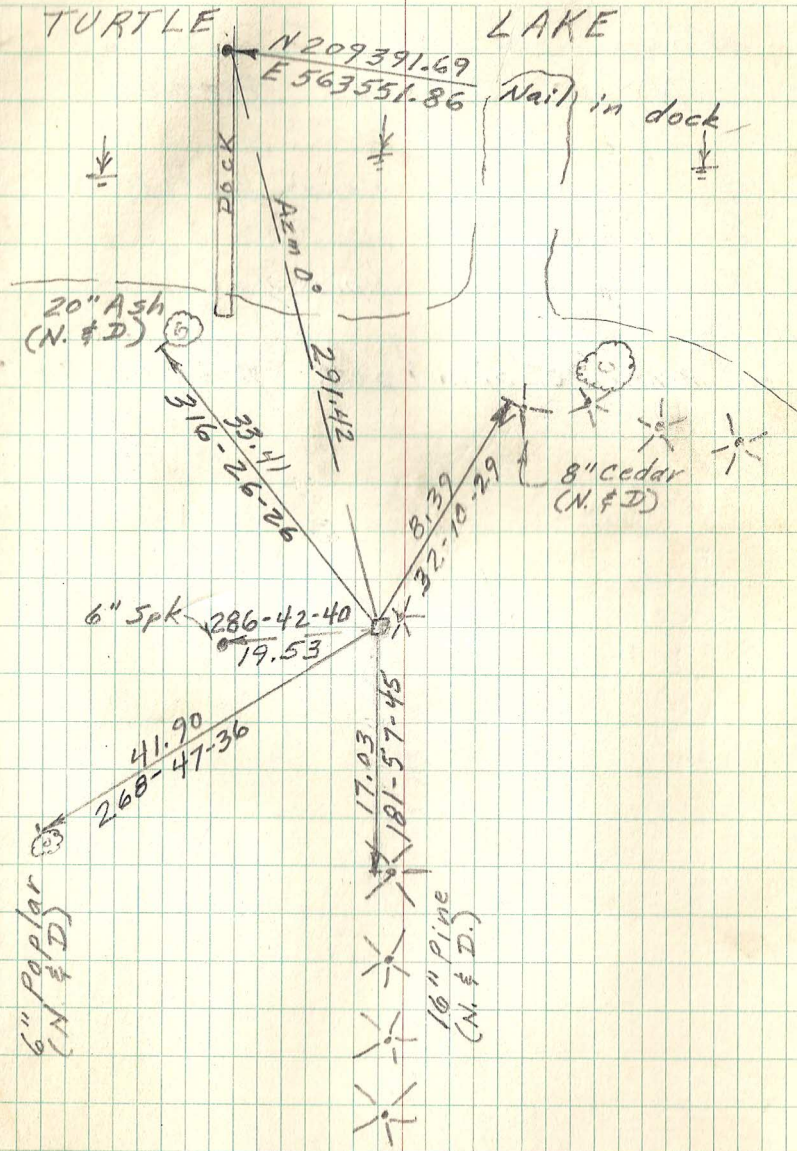


MONU. ON N. & S. 1/4 LINE
N. OF CENTER SECTION
14, T30, R23.

Found granite monu. up 12" ±. 1-16-87
Retied monu. 5-4-90
Retied monu. (slight lean to S.) 7-7-97
Set sign & post 0.7' ± South. 7-7-03
Retied monu. 4-29-10



Ho. # 859
Co. Rd G²

Ho. # 855
Co. Rd. G²