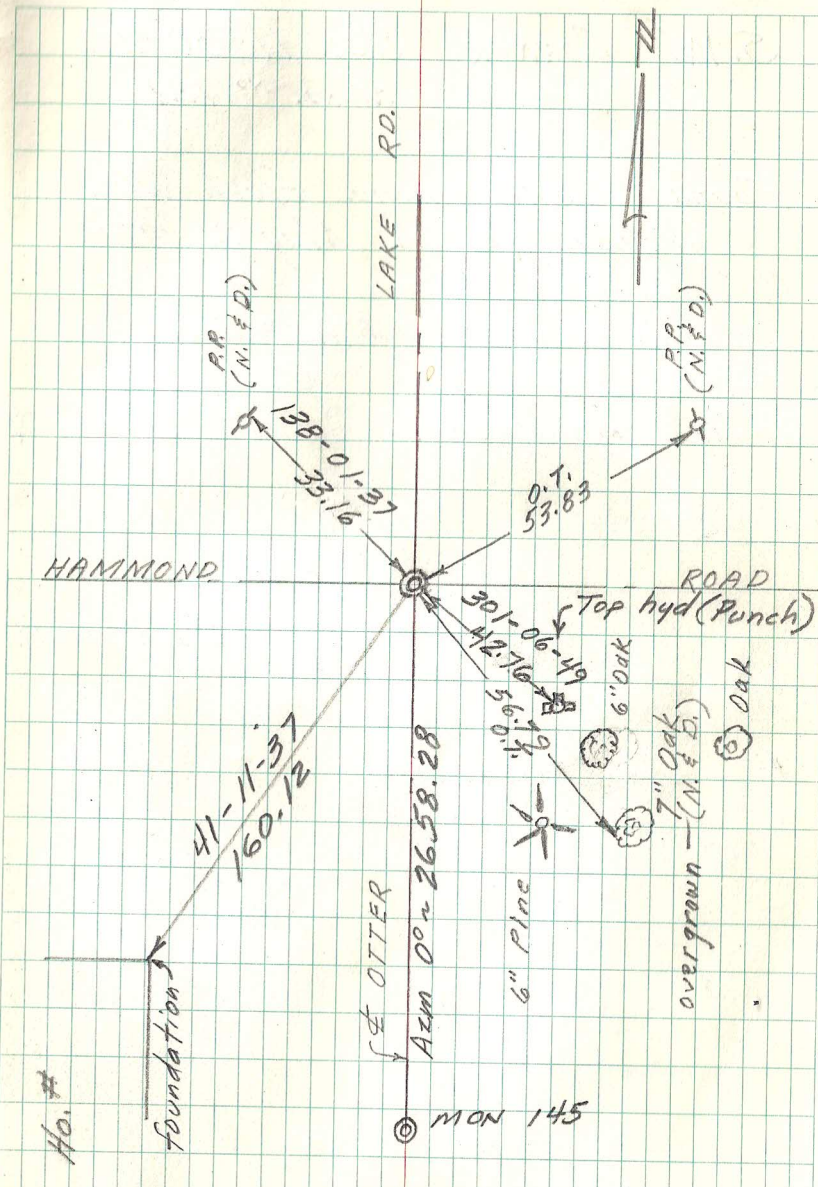


NORTH $\frac{1}{4}$ COR. SEC. 15-30-22
 MONU. NO. 120

Found granite monu. down 0.3 ft.
 Placed Cast Iron cap and bolt,
 cemented on top. May 21, 1974.
 Re-tied June 20, 1974.
 Removed cap 5-7-79 for sewer consti.
 Replaced with 20" C.I.

Retied monu. (down 0.2'). 9-21-89
 Re-tied. 9-30-99
 RETIED 9-24-04
 RETIED MONUMENT 10-13-09

Tied monument for removal during road
 reconstruction 9-6-12
 Set new "Ramsey County" 20 in. C.I.M.
 in a C.I.M.H assembly using construction
 ties. Tied monument. 9-21-12



No. #

© MON 145