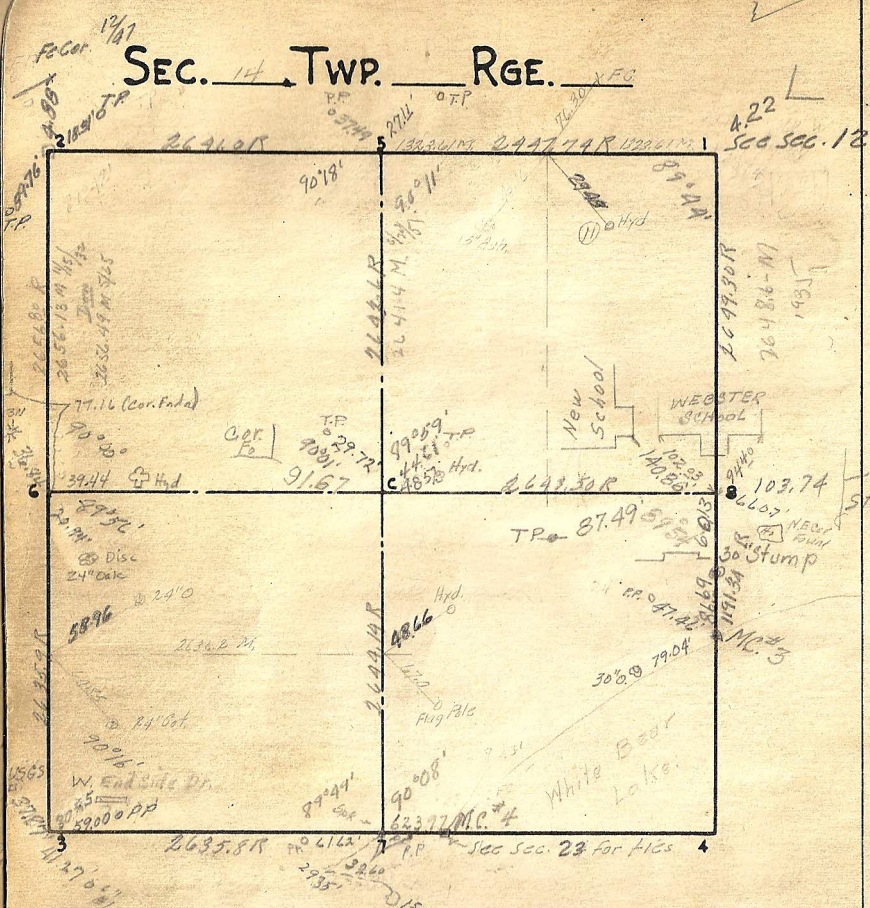


SEC. 14 TWP. RGE.



Cor. Remarks

- MC #3 Re. Est. Mar. 17-33 - using angle and }
119.134' record distance from E. 1/4 cor. }
- #3 Placed mont. 4-24-34
- #6 Placed iron mont 5/17/65 RAB

Best Sprke | OK 10/39

2

3 ~~OK 10/39~~ New Ties 2/54 FK

4 In Lake

Granite 5 OK 10/39

6 OK 10/39 New ties 5/65 RAB

7 OK 10/39

Granite 8 OK 10/39 Reset 5/1/59 1/65 Question of Ties Position

C OK 10/39

Mo #3 out

Mo #4 OK 10/39