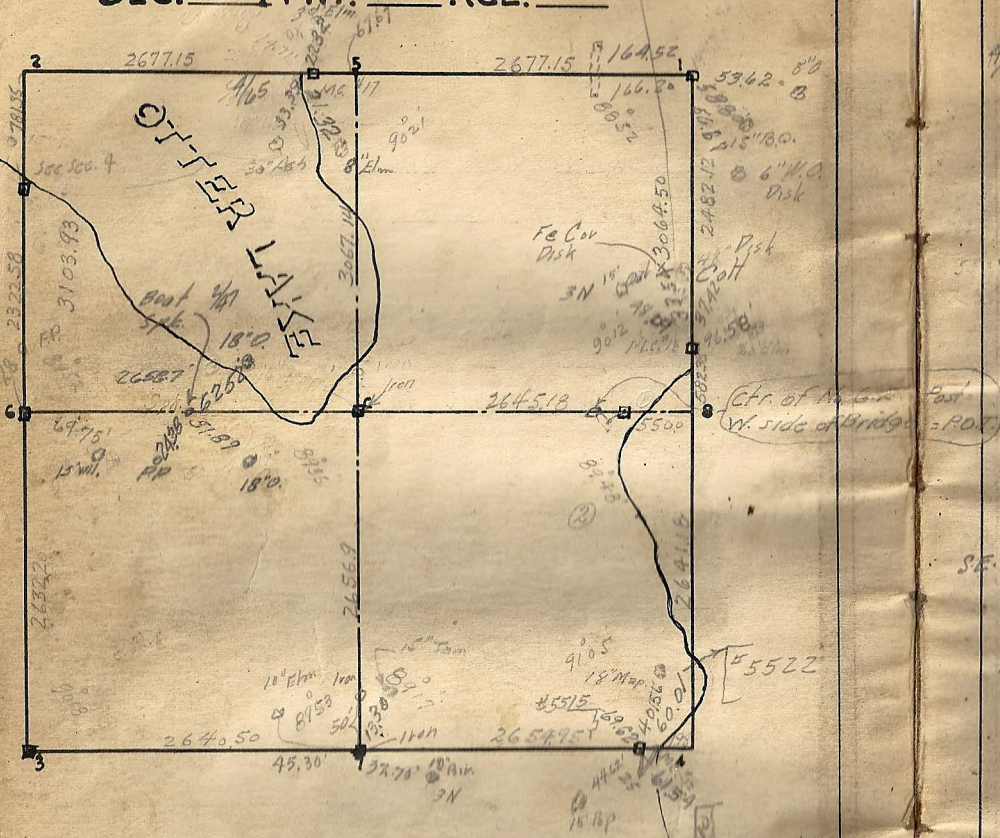


SEC. 7 TWP.            RGE.           



Cor.                      Remarks

# 7 Placed 2" Iron 5-22-34 and tied out

Mc #13 ok 1939

Mc #14 ok 1939

C Placed Iron 2-2-40

For B.M's see next page

#/65 RR Spike  
over  
Granite 1 Found one Gov. witness Stump Fixed

Jan. 1902 Set mont Dec. 1902

2 In Lake

Granite  
90°26' Iron  
over 3 Found old stake at sec. cor. W.T. gone

Fixed Feb 11-1902 Set Mont Dec 1902

4 In Lake

5 Fixed halfway between N.E. and N.W.  
Cor. Feb 1902

#/65  
S.E. 90°00' 1/4 6 Found old stake at E. cor. no Gov. W.T. Feb. 1902  
Set mont. Dec. 1902

Iron  
1907 7 Found old stake also two Gov. W.Ts. Retired  
Oct 1896 Set mont Dec. 1902

8 In Lake

Est  
C Fixed by intersection Feb. 1902 set  
mont Dec. 1902.

MC #12 Run meander notes from M.C. #11  
and fixed on old line of Fence. Set. Dec. 1902

#/65 Granite  
Lowered  
Granite MC #13 Found one Gov. W.T. Set. Mt Dec 1902

#/65 Granite MC #17 Found Two Gov. W.Ts Set. Mt Dec. 1902

ok 1939 MC #18 Found Two Gov. W.Ts Set mont. Dec. 1902